



OPEN ACCESS

IOC consensus statement: dietary supplements and the high-performance athlete

Ronald J Maughan,¹ Louise M Burke,^{2,3} Jiri Dvorak,⁴ D Enette Larson-Meyer,⁵ Peter Peeling,^{6,7} Stuart M Phillips,⁸ Eric S Rawson,⁹ Neil P Walsh,¹⁰ Ina Garthe,¹¹ Hans Geyer,¹² Romain Meeusen,¹³ Lucas J C van Loon,^{3,14} Susan M Shirreffs,¹ Lawrence L Spriet,¹⁵ Mark Stuart,¹⁶ Alan Vernec,¹⁷ Kevin Currell,¹⁸ Vidya M Ali,¹⁹ Richard GM Budgett,²⁰ Arne Ljungqvist,²¹ Margo Mountjoy,^{22,23} Yannis P Pitsiladis,¹⁹ Torbjørn Soligard,²⁰ Uğur Erdener,¹⁹ Lars Engebretsen²⁰

For numbered affiliations see end of article.

Correspondence to

Professor Ronald J Maughan,
School of Medicine, St Andrews
University, St Andrews, UK;
ronmaughan@st-andrews.ac.uk

Accepted 3 February 2018

ABSTRACT

Nutrition usually makes a small but potentially valuable contribution to successful performance in elite athletes, and dietary supplements can make a minor contribution to this nutrition programme. Nonetheless, supplement use is widespread at all levels of sport. Products described as supplements target different issues, including (1) the management of micronutrient deficiencies, (2) supply of convenient forms of energy and macronutrients, and (3) provision of direct benefits to performance or (4) indirect benefits such as supporting intense training regimens. The appropriate use of some supplements can benefit the athlete, but others may harm the athlete's health, performance, and/or livelihood and reputation (if an antidoping rule violation results). A complete nutritional assessment should be undertaken before decisions regarding supplement use are made. Supplements claiming to directly or indirectly enhance performance are typically the largest group of products marketed to athletes, but only a few (including caffeine, creatine, specific buffering agents and nitrate) have good evidence of benefits. However, responses are affected by the scenario of use and may vary widely between individuals because of factors that include genetics, the microbiome and habitual diet. Supplements intended to enhance performance should be thoroughly trialled in training or simulated competition before being used in competition. Inadvertent ingestion of substances prohibited under the antidoping codes that govern elite sport is a known risk of taking some supplements. Protection of the athlete's health and awareness of the potential for harm must be paramount; expert professional opinion and assistance is strongly advised before an athlete embarks on supplement use.

INTRODUCTION

Dietary supplements are used by athletes at all levels of sport, reflecting the prevalence of their use in the wider society. About half of the adult US population uses some form of dietary supplements,¹ and although there are regional, cultural and economic differences, a similar prevalence is likely in many other countries. Athletes describe a range of different reasons for their supplement choices,² and products that fit the description of 'supplement' can target various roles within the athlete's performance plan. These include the maintenance of

good health by contributing to the required intake of specific nutrients, the management of micro-nutrient deficiencies, and the provision of energy and macronutrient needs that might be difficult to achieve through food intake alone. Other specific uses of supplements reported by athletes include direct performance enhancement or the indirect benefits that arise from the provision of support for hard training, the manipulation of physique, the alleviation of musculoskeletal pain, rapid recovery from injury and enhancement of mood.

Some sporting bodies now support the pragmatic use of supplements that have passed a risk-versus-benefit analysis of being effective, safe and permitted for use, while also being appropriate to the athlete's age and maturation in their sport. This review summarises the issues faced by high-performance athletes and their support team (coach, trainer, nutritionist, physician) when considering the use of supplements, with the goal of providing information to assist them to make informed decisions.

WHAT IS A SUPPLEMENT?

There is no single definition, either legal or within nutritional science, of what constitutes a dietary supplement. The US Congress, for example, in framing the 1994 Dietary Supplement Health and Education Act (DSHEA; https://ods.od.nih.gov/About/DSHEA_Wording.aspx), described a dietary supplement as:

'...a product, other than tobacco, which is used in conjunction with a healthy diet and contains one or more of the following dietary ingredients: a vitamin, mineral, herb or other botanical, an amino acid, a dietary substance for use by man to supplement the diet by increasing the total daily intake, or a concentrate, metabolite, constituent, extract, or combinations of these ingredients'.³

This definition is unsatisfactory, as it depends on whether or not a 'healthy diet' is consumed. For the purposes of this overview, we define a dietary supplement as the following:

A food, food component, nutrient, or non-food compound that is purposefully ingested in addition to the habitually consumed diet with the aim of achieving a specific health and/or performance benefit.



► <http://dx.doi.org/10.1136/bjsports-2018-099199>



Check for updates

To cite: Maughan RJ, Burke LM, Dvorak J, et al. *Br J Sports Med* 2018;**52**:439–455.

Furthermore, we recognise that dietary supplements come in many forms, including the following:

1. functional foods, foods enriched with additional nutrients or components outside their typical nutrient composition (eg, mineral-fortified and vitamin-fortified, as well as nutrient-enriched foods)
2. formulated foods and sports foods, products providing energy and nutrients in a more convenient form than normal foods for general nutrition support (eg, liquid meal replacements) or for targeted use around exercise (eg, sports drinks, gels, bars)
3. single nutrients and other components of foods or herbal products provided in isolated or concentrated forms
4. multi-ingredient products containing various combinations of those products described above that target similar outcomes.

PREVALENCE OF, AND RATIONALE FOR, USE BY ATHLETES

With such widespread use of supplements in the general population and with the specific focus of athletes on achieving peak performance, it is not surprising that a high prevalence of supplement use is reported in most surveys of athletes.⁴ Comparisons between surveys are confounded by numerous factors: these include differences in the definition of what constitutes a dietary supplement; ability to capture irregular use; inappropriate sample selection; and the use of non-validated and non-standardised survey instruments.⁵ Nevertheless, surveys generally suggest that supplement use:

1. varies across different sports and activities
2. increases with level of training/performance
3. increases with age
4. is higher in men than in women
5. is strongly influenced by perceived cultural norms (both sporting and non-sporting).

Although athletes often consume supplements to take advantage of intended/claimed effects or benefits, a range of motives underpin supplement use.⁵ For example, athletes use supplements:

1. to correct or prevent nutrient deficiencies that may impair health or performance
2. for convenient provision of energy and nutrients around an exercise session
3. to achieve a specific and direct performance benefit in competition
4. to gain a performance improvement indirectly accrued from outcomes such as allowing more effective training (ie, higher intensity, greater volume), better recovery from training sessions, optimising mass and body composition, or reducing risks of injury and illness
5. for financial gain (sponsorship) or because products are provided free of charge
6. as a 'just in case' insurance policy
7. because they know or believe that other athletes/competitors are using the supplement(s).

Some supplements may be used for multiple functions. Zinc, for example, may be taken with the aim of promoting wound healing and tissue repair,⁶ or reducing the severity and duration of the symptoms of an upper respiratory tract infection.⁷ Carbohydrate supplements are used to enhance performance in many events via the provision of fuel substrate,⁸ to support the immune system⁹ or to improve bioavailability of other supplements, for example, creatine.¹⁰ Similarly, creatine supplementation may directly enhance performance in strength and power events, and can assist in training harder, gaining lean body mass

or maintaining lean mass during periods of immobilisation after injury.^{11–13} Decisions on supplement use therefore need to consider both the context of use and the specific protocol employed.

ASSESSING THE EVIDENCE BASE FOR SUPPLEMENT USE

Supplements target a range of scenarios of use, so different approaches are needed to assess their effectiveness. Supplements aimed at correcting nutrient deficiencies need to be judged on their ability to prevent or treat suboptimal nutrient status, with the benefit accruing from the removal of the associated impairment of health, training capacity or performance. The effectiveness of sports foods might be hard to isolate when they are used within the general diet to meet everyday energy needs and nutrient targets. However, benefits may be more easily detected when they are specifically consumed before, during or after an event or training session to provide nutrients that are limiting for performance (eg, to provide fuel for the muscle or brain) or to defend homeostasis (eg, by replacing water and salt losses). Performance-enhancing supplements, which are claimed to achieve direct or indirect benefits, pose a greater challenge in terms of a sound evidence base. With only a few exceptions, there is a scarcity of research, and many of the available studies are not of sufficient quality to warrant their application to elite athletes.

Substantiating the claims made about performance supplements and sports foods is difficult.¹⁴ To various audiences, 'proof' comes in different forms. Figure 1 provides a proposed hierarchical model of the relative strength of the evidence provided by different information sources. However, most of the information around supplement efficacy in sport comes from models with the lowest rigour: anecdotes/observations from athletes; and scientific or mechanistic hypotheses that explain how a supplement might target a critical/limiting factor in performance, but with little to no evidence. Systematic reviews and meta-analyses, which synthesise the outputs of many studies to yield a conclusive statement of efficacy in a broad sense, are at the top of the evidence hierarchy. While these summaries help to provide information about the general use of performance supplements, scientific trials that are properly controlled and well-conducted provide the basis for these reviews as well as an opportunity to address more specific questions about supplement applications. Thus, meta-analyses are a reflection only of the quality and quantity of the studies that are available for review, and may also be influenced by the inclusion and exclusion criteria applied to the available data.

The 'gold standard' for investigating the effects of supplements on sports performance is the prospective, randomised, controlled scientific trial, in which subjects are randomly allocated to receive either an experimental or placebo treatment (ideally in a double-blind manner) or crossed over to receive both treatments in counterbalanced order, under standardised conditions. Practical issues may cause some variations to ideal design, but sports scientists are encouraged, if they wish their results to be applicable to athletes in competition, to ensure that their studies include the following:

1. an adequate sample size and appropriate participant characteristics (eg, event, training status, calibre) to allow the results to have statistical power and to be applicable to high-performance athletes
2. mimicking, as far as possible, the conditions (eg, environment, nutrition preparation, event strategies) that exist in real-life competition

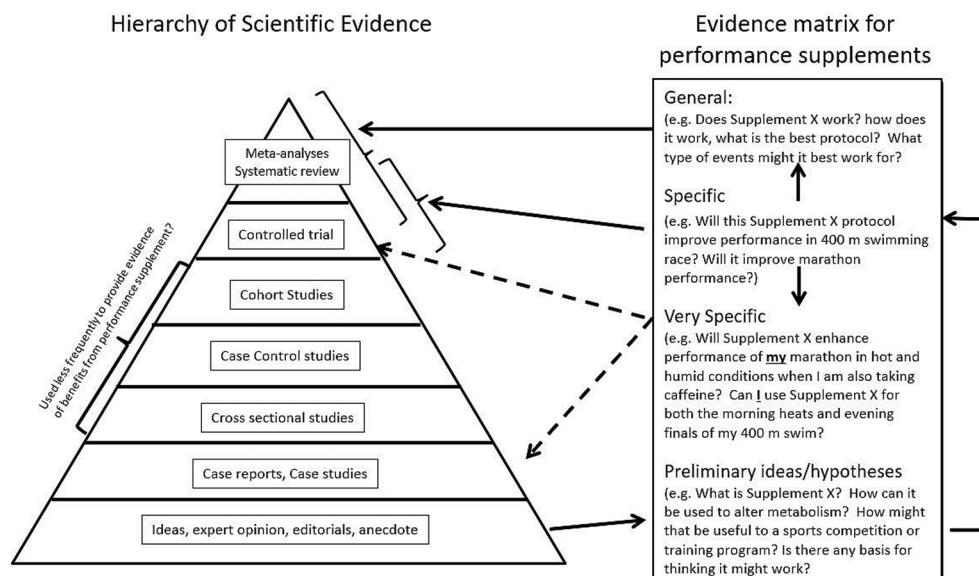


Figure 1 Hierarchy of evidence used to establish good practice focused on the issue of nutritional supplements.

3. standardisation, to the extent that is possible, of variables that might influence the results (eg, pretrial exercise and diet, environmental conditions, external encouragement or distraction)—it is recognised that this conflicts to some extent with (2) above, and will limit the situations in which the results can be applied
4. use of a protocol of supplement use (eg, specific product, dose and timing of intake) that is likely to optimise any effects
5. an independent verification of the contents of the supplement under investigation to ensure that the product is truly unadulterated, both to ensure the integrity of the study and to avoid inadvertent doping positives if the subjects are athletes
6. verification that the supplement was taken and induced a biological response (eg, via muscle, blood, urine or saliva sampling)
7. a performance protocol that is valid and sufficiently reliable to detect small but potentially meaningful changes/differences in performance outcomes
8. interpretation of results in light of the limitations of the study design and the change that would be meaningful to real-life sport.

Given the specificity of the information that is required by some athletes and their support staff to assess the effectiveness of a supplement (eg, related to a targeted event and its conditions, the specific individual, the combination with other performance strategies), it is unreasonable to expect that definitive evidence will always be available. Issues that are particularly under-researched and should be considered of high priority include measurement of performance in the field or under 'real-life' conditions, investigation of the combined use of a number of supplements, and the repeated use of supplements as might occur in multiday competition or when heats and finals occur close together. Scenarios that fall outside the scope of the available literature or practical research design may need to be interrogated by individual or small group case studies. Recommended methodologies for these studies include repeated baseline performances before the introduction of the supplement, or an alternating series of presentation and absence of the supplement.¹⁵

For the purposes of this overview, we rely primarily on studies of healthy adults that are relevant to athletes. We recognise that

data from studies of elite athletes are almost entirely absent. We also recognise that mechanistic studies on animal and cell culture models are useful in identifying mechanisms, but a mechanism is not necessary to demonstrate an effect that may be meaningful to an athlete: what we think today to be the mechanism by which enhancement of performance or health occurs might be proved wrong by later studies. It must also be recognised that an individual's habitual diet can affect gene expression and their microbiota, and these in turn can affect response to supplementation. While the variation in the genome between individuals is less than 0.01%, the variation in microbiota is significant (80%–90%), and emerging data suggest that both these factors could affect athletic performance.^{16 17} The following sections present an overview of the use of supplements to address different roles in sports nutrition, first by identifying the principles of use and then by examining some of the specific products that have a good or emerging evidence base to support this situation-specific use by athletes.

Supplements used to prevent or treat nutrient deficiencies

Many micronutrients play an important role in the regulation of processes that underpin sports performance, ranging from energy production to the manufacture of new cells and proteins. A frank deficiency of one or more of these nutrients may lead to a measurable impairment of sports performance—either directly or by reducing the athlete's ability to train effectively (eg, iron deficiency anaemia) or to stay free from illness or injury (eg, impact of vitamin D deficiency on bone health). Athletes are not immune to the inadequate eating practices or the increased nutrient loss/requirements found in some members of the general population and may even be at greater risk of deficiencies because of increased nutrient turnover or increased losses. A further challenge is the occurrence of subclinical deficiencies that may be both hard to assess (ie, they lack a clear metric or universal threshold of what is 'adequate') as well as being subject to debate about whether there is an 'optimal' level for performance that differs from the usual classification systems of nutrient status (deficiency/subclinical deficiency/normal). When suboptimal nutritional status is diagnosed, the use of a nutrient supplement to reverse

Consensus statement

Table 1 Examples of micronutrients often requiring supplementation in athletes (see Larson-Meyer *et al*¹⁸ for additional information)

Micronutrient	Overview	Diagnosis and outcomes of insufficiency	Protocols and outcomes of supplementation
Vitamin D	It is important in the regulation of gene transcription in most tissues, so insufficiency/deficiency affects many body systems. ⁴² Many athletes are at risk of insufficiency at various times throughout the year. ⁴³	No consensus over the serum 25-hydroxyvitamin D concentration (the marker of vitamin D status) that defines deficiency, insufficiency, sufficiency and a tolerable upper limit. The need to supplement depends on UVB exposure and skin type.	Supplementation of between 800 IU and 1000–2000 IU/day is recommended to maintain status for the general population. Supplementation guidelines are not yet established in athletes. Short-term, high-dose supplementation which includes 50 000 IU/week for 8–16 weeks or 10 000 IU/day for several weeks may be appropriate for restoring status in deficient athletes. Careful monitoring is necessary to avoid toxicity. ⁴⁴
Iron	Suboptimal iron status may result from limited iron intake, poor bioavailability and/or inadequate energy intake, or excess iron need due to rapid growth, high-altitude training, menstrual blood loss, foot-strike haemolysis, or excess losses in sweat, urine or faeces. ⁴⁵	Several measures performed simultaneously provide the best assessment and determine the stage of deficiency. Recommended measures: serum ferritin, transferrin saturation, serum iron, transferrin receptor, zinc protoporphyrin, haemoglobin, haematocrit and mean corpuscular volume. ⁴⁶	Athletes who do not maintain adequate iron status may need supplemental iron at doses greater than their RDA (ie, >18 mg/day for women and >8 mg/day for men). Athletes with iron deficiency require clinical follow-up, which may include supplementation with larger doses of oral iron supplementation along with improved dietary iron intake. ⁴⁵ Numerous oral iron preparations are available and most are equally effective as long as they are taken. ⁴⁷ High-dose iron supplements, however, should not be taken unless iron deficiency is present.
Calcium	Avoidance of dairy products and other calcium-rich foods, restricted energy intake and/or disordered eating increases risk of suboptimal calcium status. ⁴⁵	There is no appropriate indicator of calcium status. Bone mineral density scan may be indicative of chronic low calcium intake, but other factors including suboptimal vitamin D status and disordered eating are also important.	Calcium intakes of 1500 mg/day and 1500–2000 IU vitamin D are recommended to optimise bone health in athletes with low energy availability or menstrual dysfunction. ⁴⁵

Note: Indiscriminate supplementation with any of the above nutrients is not recommended. Deficiencies should first be identified through nutritional assessment, which includes dietary intake and the appropriate blood or urinary marker, if available.¹⁷

or prevent further deficiencies can contribute to the overall treatment plan.

Nutritional assessment of an athlete involves systematic protocols that obtain, verify and interpret evidence of nutrition-related problems, as well as their causes and significance. A complete assessment should ideally include a detailed medical and nutritional history, diet evaluation, anthropometry and body composition analysis, and biochemical testing.¹⁸ Unlike the ad hoc use of nutrient supplements taken by athletes as an insurance policy, this nutritional assessment should ensure that the athlete:

1. can address the factors that led to the nutrient deficiency, including ensuring that the athlete's nutrition plan is adequate in energy, macronutrients and micronutrients
2. would benefit from an acute or chronic period of supplementation to correct and/or prevent a nutrient deficiency and can understand the appropriate supplementation protocol
3. is not at risk for health issues associated with supplement use, including interactions with prescription or over-the-counter medications
4. has a baseline assessment against which future measures to assess progress can be compared.

Nutrients that often need to be supplemented under these circumstances include iron, calcium and vitamin D (table 1). Iodine (for those living in areas with low levels of iodine in foods or not using iodised salt), folate (for women who might become pregnant) and vitamin B₁₂ (for those following a vegan or near-vegan diet) supplementation may be warranted in these population groups, but these considerations do not apply specifically to athletes.

Supplements (sports foods) used to provide a practical form of energy and nutrients

Sports nutrition guidelines provide clear recommendations for targeted intake of energy and nutrients in a variety of contexts. In some situations, it is impractical for an athlete to consume 'everyday' or normal foods to meet their nutrition goals due to issues around preparation or storage, ease of consuming the foods due to training schedules, gut comfort, or the challenge of meeting nutrient targets within the available energy budget.

In these cases, sports foods can provide a convenient, although usually more expensive, alternative option for meeting these nutrient goals. Table 2 provides an overview of products that fit this description and their more common evidence-based uses.

Supplements that directly improve sports performance

A few performance-enhancing supplements might, at the present time, be considered to have an adequate level of support to suggest that marginal performance gains may be possible. These supplements include caffeine, creatine (in the form of creatine monohydrate), nitrate, sodium bicarbonate and possibly also Beta-alanine. The mechanisms of action, typical dose, potential performance benefits and known side effects of each of these supplements are summarised in table 3. Performance-enhancing supplements should be considered only where a strong evidence base supports their use as safe, legal and effective, and ideally after adequacy of sports nutrition dietary practices is ensured. Whenever possible, supplements should be trialled thoroughly by the athlete in training that mimics the competition milieu as closely as possible before committing to use in a competition setting. Athletes should do a careful risk analysis to see if the marginal gains would outweigh the risk of inadvertent doping due to contamination.

Supplements that improve performance indirectly

Many dietary supplements claim to enhance performance indirectly—by supporting the athlete's health, body composition, and their ability to train hard, recovery quickly, adapt optimally, avoid or recover from injury, and tolerate pain or soreness. Illness is a major problem for athletes if it interrupts training or occurs at a critical time, such as during a selection event or a major competition. Susceptibility to illness is increased in situations where athletes are involved in a high volume of training or competition, and either intentionally or unintentionally experience deficits in energy intake (eg, weight loss diets), macronutrient intake (eg, train-low or sleep-low-carbohydrate) and micronutrient status (eg, vitamin D insufficiency in the winter).¹⁹ Athletes might benefit from nutritional supplements to support

Table 2 Summary of common sports foods and functional foods used by athletes.

Sports food	Form	Typical composition	Common sports-related use
Sports drink	Powder or ready to drink liquid	5%–8% CHO 10–35 mmol/L sodium 3–5 mmol/L potassium	Simultaneous delivery of fluid+CHO during exercise Postexercise rehydration and refuelling
Energy drink	Ready-to-drink liquid or concentrated shot	Carbohydrate, especially in typical ready-to-drink varieties Caffeine Note: may contain taurine, B vitamins and other ingredients with variable supporting evidence and some level of concern	Pre-exercise caffeine supplement Carbohydrate and caffeine intake during exercise
Sports gel or sports confectionery	Gel: 30–40 g sachets confectionery; jelly-type confectionery (generally in pouch of ~40–50 g)	~25 g CHO per sachet or ~5 g CHO per confectionery piece Some contain caffeine or electrolytes	Carbohydrate intake during exercise
Electrolyte replacement supplements	Powder sachets or tablets	50–60 mmol/L sodium 10–20 mmol/L potassium Typically, low carbohydrate (2–4 g/100 mL)	Rapid rehydration following dehydration undertaken for weight-making Replacement of large sodium losses during ultra-endurance activities Rapid postexercise rehydration following moderate to large fluid and sodium deficits
Protein supplement	Powder (mix with water or milk) or ready-to-drink liquid Protein-rich bar, usually low in CHO	Provides 20–50 g protein in a single serve from high-quality types of animal (whey, casein, milk, egg) or vegetable (eg, soy) origin Note: may contain other ingredients, some of which are not evidence-based and may increase the risk of contamination	Postexercise recovery following key training sessions or events where adaptation requiring protein synthesis is desired Achievement of increase in lean mass during growth or response to resistance training Portable nutrition for busy schedule or travel
Liquid meal supplement	Powder (mix with water or milk) or ready-to-drink liquid	1–1.5 kcal/mL: 15%–20% protein and 50%–70% CHO Low to moderate fat Vitamins/minerals: 500–1000 mL supplies RDI/RDAs	Supplement high-energy diet (especially during heavy training/competition or weight gain) Low-bulk meal replacement (especially pre-event meal) Postexercise recovery (CHO and protein) Portable nutrition for busy schedule or travel
Sports bar	Bar	40–50 g CHO 5–10 g protein Usually low in fat and fibre Vitamins/minerals: 50%–100% of RDA/RDIs Note: may contain other ingredients, some of which are not evidence-based and may increase the risk of contamination	CHO source during exercise Postexercise recovery—provides CHO, protein and micronutrients Portable nutrition for busy schedule or travel
Protein-enhanced food	Milk, yoghurt, ice cream, cereal bars and other food forms	Increased protein content from normal food variety achieved by adding protein sources or filtration of water from product Typically allows normal portion to provide ~20 g protein to meet sports nutrition target	Value-added food able to achieve protein target for postexercise use or to improve protein content of other meals and snacks in an athlete's diet

CHO, carbohydrate.

immunity in these scenarios and at other times when they are either susceptible to infection (eg, during the common cold season and after long-haul travel) or suffering from an infection. Table 4 summarises evidence for some of the commonly promoted 'immune supportive' supplements, noting that the most promising candidates to assist in the prevention or treatment of upper respiratory symptoms are vitamin D and probiotics. Vitamin C during periods of heavy exertion and zinc lozenges at the onset of symptoms may be useful, but high doses of single antioxidants, particularly vitamins C and E, may blunt exercise-induced training adaptations.^{20–22} Probiotic supplementation may reduce the incidence of travellers' diarrhoea and gastrointestinal infection. Cochrane reviews have noted the low quality of many studies on nutritional supplements that are claimed to support immunity; specifically, small samples, poor controls and unclear procedures for randomisation and blinding were commonplace.^{23–24} Clearly, there is a pressing need for randomised controlled trials in high-level athletes with sufficient participant numbers, rigorous controls and procedures, appropriate supplementation regimens, and clinically meaningful measures of immunity.

Supplements that assist an athlete to train harder, recover more quickly and prevent injury, or accelerate return to play when injury does occur can obviously enhance the athlete's preparation and, indirectly, their competition outcomes. Many products claim to provide benefits of this nature; table 5 summarises the evidence for some of the most popular compounds. Finally, the manipulation of body composition, including gaining lean (muscle) mass and reducing body fat levels, can contribute to performance in many events. This explains the large number of 'weight gainers' and 'fat burners' in the general and sports supplement market, although many of these are prohibited in sport. Protein is considered to be the premier ingredient in weight gain-promoting supplements, and evidence-based reviews conclude that protein is effective at promoting lean mass gain when combined with resistive exercise.²⁵ Evidence of efficacy for 'fat burning' supplements is far from conclusive, however, and there is a complete absence of evidence for the effectiveness of the vast majority of supplements marketed in this category. Table 6 summarises the evidence for some of the most common ingredients or products of this type.²⁵

Consensus statement

Table 3 Supplements with good to strong evidence of achieving benefits to performance when used in specific scenarios

Caffeine	
Overview	Caffeine is a stimulant that possesses well-established benefits for athletic performance across endurance-based situations, and short-term, supramaximal and/or repeated sprint tasks.
Mechanism	Adenosine receptor antagonism; increased endorphin release; improved neuromuscular function; improved vigilance and alertness; reduced the perception of exertion during exercise ^{29 48}
Protocol of use	3–6 mg/kg of body mass (BM), in the form of anhydrous caffeine (ie, pill or powder form), consumed ~60 min prior to exercise ⁴⁹ Lower caffeine doses (<3 mg/kg BM, ~200 mg), provided both before and during exercise; consumed with a CHO source ⁴⁸
Performance Impact	Improved endurance capacity such as exercise time to fatigue ⁵⁰ and endurance-based time-trial (TT) activities of varying duration (5–150 min), across numerous exercise modalities (ie, cycling, running, rowing and others) ⁴⁹ Low doses of caffeine (100–300 mg) consumed during endurance exercise (after 15–80 min of activity) may enhance cycling TT performance by 3%–7%. ^{51 52} During short-term, supramaximal and repeated sprint tasks, 3–6 mg/kg BM of caffeine taken 50–60 min before exercise results in performance gains of >3% for task completion time, mean power output and peak power output during anaerobic activities of 1–2 min in duration, ⁵³ and of 1%–8% for total work output and repeat sprint performances during intermittent team game activity. ^{54 55}
Further considerations and potential side effects	Larger caffeine doses (≥ 9 mg/kg BM) do not appear to increase the performance benefit, ⁵⁶ and are more likely to increase the risk of negative side effects, including nausea, anxiety, insomnia and restlessness. ²⁹ Lower caffeine doses, variations in the timing of intake before and/or during exercise, and the need for (or lack thereof) a caffeine withdrawal period should be trialled in training prior to competition use. Caffeine consumption during activity should be considered concurrent with carbohydrate (CHO) intake for improved efficacy. ⁵² Caffeine is a diuretic promoting increased urine flow, but this effect is small at the doses that have been shown to enhance performance. ⁵⁷
Creatine	
Overview	Creatine loading can acutely enhance the performance of sports involving repeated high-intensity exercise (eg, team sports), as well as the chronic outcomes of training programmes based on these characteristics (eg, resistance or interval training), leading to greater gains in lean mass and muscular strength and power. ^{58 59}
Mechanism	Supplementation increases muscle creatine stores, augmenting the rate of PCr resynthesis, thereby enhancing short-term, high-intensity exercise capacity ⁶⁰ and the ability to perform repeated bouts of high-intensity effort.
Protocol of use	Loading phase: ~20 g/day (divided into four equal daily doses), for 5–7 days ⁶¹ Maintenance phase: 3–5 g/day (single dose) for the duration of the supplementation period ⁶² Note: concurrent consumption with a mixed protein/CHO source (~50 g of protein and CHO) may enhance muscle creatine uptake via insulin stimulation. ¹⁰
Performance Impact	Enhanced maximum isometric strength ⁶³ and the acute performance of single and repeated bouts of high-intensity exercise (<150 s duration); most pronounced effects evident during tasks <30 s. ^{13 61} Chronic training adaptations include lean mass gains and improvements to muscular strength and power. ^{58 59} Less common: enhanced endurance performance resulting from increased/improved protein synthesis, glycogen storage and thermoregulation ^{64 65} Potential anti-inflammatory and antioxidant effects are noted. ⁶⁶
Further considerations and potential side effects	No negative health effects are noted with long-term use (up to 4 years) when appropriate loading protocols are followed. ⁶⁷ A potential 1–2 kg BM increase after creatine loading (primarily as a result of water retention ^{66 68}) may be detrimental for endurance performance or in events where the BM must be moved against gravity (eg, high jump, pole vault) or where athletes must achieve a specific BM target.
Nitrate	
Overview	Dietary nitrate (NO_3^-) is a popular supplement that has been commonly investigated to assess any benefits for prolonged submaximal exercise ⁶⁹ and high-intensity, intermittent, short-duration efforts. ^{70 71}
Mechanism	Enhances nitric oxide (NO) bioavailability via the NO_3^- -nitrite-NO pathway, playing an important role in the modulation of skeletal muscle function ⁷² Nitrate augments exercise performance via an enhanced function of type II muscle fibres ⁷³ ; a reduced ATP cost of muscle force production; an increased efficiency of mitochondrial respiration; an increased blood flow to the muscle; and a decrease in blood flow to VO_2 heterogeneities. ⁷⁴
Protocol of use	High nitrate-containing foods include leafy green and root vegetables, including spinach, rocket salad, celery and beetroot. Acute performance benefits are generally seen within 2–3 hours following an NO_3^- bolus of 5–9 mmol (310–560 mg). ⁷⁵ Prolonged periods of NO_3^- intake (>3 days) also appear beneficial to performance ^{70 76} and may be a positive strategy for highly trained athletes, where performance gains from NO_3^- supplementation appear harder to obtain. ⁷⁷
Performance impact	Supplementation has been associated with improvements of 4%–25% in exercise time to exhaustion and of 1%–3% in sport-specific TT performances lasting <40 min in duration. ^{73 78} Supplementation is proposed to enhance type II muscle fibre function, ⁷³ resulting in the improvement (3%–5%) of high-intensity, intermittent, team-sport exercise of 12–40 min in duration. ^{70 71} Evidence is equivocal for any benefit to exercise tasks lasting <12 min. ^{76 79}
Further considerations and potential side effects	The available evidence suggests there appear to be few side effects or limitations to nitrate supplementation. There may exist the potential for GI upset in susceptible athletes, and should therefore be thoroughly trialled in training. There appears to be an upper limit to the benefits of consumption (ie, no greater benefit from 16.8 mmol (1041 mg) vs 8.4 mmol (521 mg)). ⁸⁰ Performance gains appear harder to obtain in highly trained athletes. ⁷⁷
Beta-alanine	
Overview	Beta-alanine augments intracellular buffering capacity, having potential beneficial effects on sustained high-intensity exercise performance.
Mechanism	A rate-limiting precursor to the endogenous intracellular (muscle) buffer, carnosine; the immediate defence against proton accumulation in the contracting musculature during exercise ⁸¹ Chronic, daily supplementation of Beta-alanine increases skeletal muscle carnosine content. ⁸²
Protocol of use	Daily consumption of ~65 mg/kg BM, ingested via a split-dose regimen (ie, 0.8–1.6 g every 3–4 hours) over an extended supplement time frame of 10–12 weeks. ⁸²

Continued

Table 3 Continued

Performance impact	Small, but potentially meaningful performance benefits (~0.2%–3%) during both continuous and intermittent exercise tasks of 30 s to 10 min in duration. ^{82–84}
Further considerations and potential side effects	A positive correlation between the magnitude of muscle carnitine change and performance benefit remains to be established. ⁸² Large interindividual variations in muscle carnitine synthesis have been reported. ⁸⁵ The supplement effectiveness appears harder to realise in well-trained athletes. ⁸⁶ There is a need for further investigation to establish the practical use in various sport-specific situations. ^{82 87} Possible negative side effects include skin rashes and/or transient paraesthesia.
Sodium bicarbonate	
Overview	Sodium bicarbonate augments extracellular buffering capacity, having potential beneficial effects on sustained high-intensity exercise performance.
Mechanism	Acts as an extracellular (blood) buffer, aiding intracellular pH regulation by raising the extracellular pH, and HCO ₃ [–] concentrations. ^{81 88} The resultant pH gradient between the intracellular and extracellular environments leads to efflux of H ⁺ and La [–] from the exercising muscle. ^{88 89}
Protocol of use	Single acute NaHCO ₃ dose of 0.2–0.4 g/kg BM, consumed 60–150 min prior to exercise. ^{90 91} Alternative strategies include the following: Split doses (ie, several smaller doses giving the same total intake) taken over a time period of 30–180 min. ⁹² Serial loading with 3–4 smaller doses per day for 2–4 consecutive days prior to an event. ^{93–95}
Performance impact	Enhanced performance (~2%) of short-term, high-intensity sprints lasting ~60 s in duration, with a reduced efficacy as the effort duration exceeds 10 min. ⁹⁰
Further considerations and potential side effects	Well-established GI distress may be associated with this supplement. Strategies to minimise GI upset include the following: Coingestion with a small, carbohydrate-rich meal (~1.5 g/kg BM carbohydrates) ⁹⁶ Use of sodium citrate as an alternative. ⁹⁷ Split dose or stacking strategies. ^{93–95} Given the high potential for GI distress, thorough investigation into the best individualised strategy is recommended prior to use in a competition setting.

ADVERSE EFFECTS

Adverse effects from the use of supplements may arise from a number of factors, including the safety and composition of the product per se and inappropriate patterns of use by athletes. Poor practices by athletes include the indiscriminate mixing and matching of many products without regard to total doses of some ingredients or problematic interactions between ingredients. Even commonly used products may have negative side effects, especially when used outside the optimal protocol. For example, iron supplementation in those with already adequate iron stores can result in symptoms that may begin with vomiting, diarrhoea and abdominal pain, and develop to haemochromatosis and liver failure.²⁶ Bicarbonate may cause gastrointestinal distress when ingested in amounts sufficient to enhance performance; this can impair rather than improve performance and may counteract the benefits of other supplements taken at the same time.²⁷ The 'more is better' philosophy, when applied to caffeine, may result in side effects, including nausea, anxiety, accelerated heart rate and insomnia, that outweigh the performance benefits.²⁸ Unwanted outcomes become more common with caffeine doses ≥ 9 mg/kg body mass, but maximal benefits are usually achieved with intakes of 3–6 mg/kg.²⁹ The possibility of more serious outcomes is illustrated by adverse, and potentially fatal, responses in two separate incidents in which very large doses (up to 30 g) of caffeine were administered to healthy volunteers participating in laboratory studies (<http://www.telegraph.co.uk/news/2017/01/25/university-fined-400k-students-taking-part-caffeine-experiment/>). These incidents were due to errors in the dose calculation: if this can happen in a university research environment with supposed oversight by experienced staff, the potential clearly exists for similar errors by athletes and coaches.

Athletes and members of their support team should be aware of the regulations that govern the manufacture and marketing of supplements. According to the 1994 DSHEA (https://ods.od.nih.gov/About/DSHEA_Wording.aspx) passed by US Congress, nutritional supplements sold in the USA that do not claim to diagnose, prevent or cure disease are not subject to regulation by the Food and Drugs Administration (FDA). Similar regulations

apply in most other countries, where supplements are regulated in the same way as food ingredients and are therefore not subject to the stringent regulations that are applied to the pharmaceutical industry. This means that there is no requirement to prove claimed benefits, no requirement to show safety with acute or chronic administration, no quality assurance of content, and liberal labelling requirements. It is well-recognised that there are problems with some of the dietary supplements on sale, but the options open to those responsible for food safety are limited by the legislation that applies. The FDA regularly uses its powers to recall products in breach of the regulations, although they fully admit that their resources are insufficient for comprehensive monitoring, and recalls generally occur only after many people are harmed (<https://www.fda.gov/food/recall-southbreaksemergencies/recalls/default.htm>): they have recently recalled supplement products containing excessive doses of vitamins A, D, B₆ and selenium because of potentially toxic levels of these components. Examples of product complaints have included the presence of impurities, including lead, broken glass and metal fragments, because of the failure of the producers to observe good manufacturing practice. The risk of gastrointestinal upset because of poor hygiene during the production and storage of products is also of concern. Although this may seem a minor inconvenience, and of similarity to food safety issues, the coincidence of problems around a crucial training period or competitive event may significantly interfere with the athlete's performance goals. It should be noted, though, that all of these problems are also regularly reported in normal foods.

Some supplements may actually cause harm to health, but these can be difficult to identify, and products are usually withdrawn only after a significant number of adverse events have occurred. For example, a range of products containing hydroxycitric acid were withdrawn from sale, but only after they were linked with the death of one consumer and with a substantial number of other cases of liver toxicity, cardiovascular problems and seizures (<https://www.fda.gov/downloads/safety/recalls/enforcementreports/ucm169089.pdf>). The extent of the problem is illustrated by the fact that, in the USA in 2015, approximately

Consensus statement

Table 4 Nutritional supplements for immune health in athletes: proposed mechanism of action and evidence for efficacy

Supplement	Proposed mechanism of action	Evidence for efficacy
Vitamin D	This is an essential fat-soluble vitamin known to influence several aspects of immunity, particularly innate immunity (eg, expression of antimicrobial proteins). Skin exposure to sunlight accounts for 90% of the source of vitamin D.	Moderate support Evidence for deficiency in some athletes and soldiers, particularly in the winter (decreased skin sunlight exposure) Deficiency has been associated with increased URS. Recommend 1000 IU/day D ₃ autumn-spring to maintain sufficiency Further support required ⁹⁸
Probiotics	Probiotics are live micro-organisms that when administered orally for several weeks can increase the numbers of beneficial bacteria in the gut. These have been associated with a range of potential benefits to gut health, as well as modulation of immune function.	Moderate support in athletes with daily dose of ~10 ¹⁰ live bacteria Cochrane review of 12 studies (n=3720) shows ~50% decrease in URS incidence and ~2 day shortening of URS; minor side effects. More evidence is required supporting efficacy to reduce gastrointestinal distress and infection, for example, in a travelling athlete. ^{23 99}
Vitamin C	This is an essential water-soluble antioxidant vitamin that quenches ROS and augments immunity. It reduces interleukin-6 and cortisol responses to exercise in humans.	Moderate support for 'preventing URS' Cochrane review of 5 studies in heavy exercisers (n=598) shows ~50% decrease in URS taking vitamin C (0.25–1.0 g/day). Further support required Unclear if antioxidants blunt adaptation in well-trained Relatively small effects on cortisol compared with carbohydrate; immune measures no different from placebo No support for 'treating URS' Cochrane reviews show no benefit of initiating vitamin C supplementation (>200 mg/day) after onset of URS. ^{100 101}
Carbohydrate (drinks, gels)	It maintains blood glucose during exercise, lowers stress hormones, and thus counters immune dysfunction.	Low-moderate support Ingestion of carbohydrate (30–60 g/hour) attenuates stress hormone and some, but not all, immune perturbations during exercise. Very limited evidence that this modifies infection risk in athletes. ^{19 102}
Bovine colostrum	First milk of the cow that contains antibodies, growth factors and cytokines Claimed to improve mucosal immunity and increase resistance to infection	Low-moderate support that bovine colostrum blunts the decrease in saliva antimicrobial proteins after heavy exercise Some evidence in small numbers of participants that bovine colostrum decreases URS Further support required ^{103 104}
Polyphenols, for example, Quercetin	These are plant flavonoids. In vitro studies show strong anti-inflammatory, antioxidant and antipathogenic effects. Animal data indicate an increase in mitochondrial biogenesis and endurance performance.	Low-moderate support Human studies show some reduction in URS during short periods of intensified training and mild stimulation of mitochondrial biogenesis and endurance performance, although in small numbers of untrained subjects. Limited influence on markers of immunity Putative antiviral effect for Quercetin Further support required ^{105 106}
Zinc	This is an essential mineral that is claimed to reduce incidence and duration of colds. Zinc is required for DNA synthesis and as an enzyme cofactor for immune cells. Zinc deficiency results in impaired immunity (eg, lymphoid atrophy) and zinc deficiency is not uncommon in athletes.	No support for 'preventing URS' High doses of zinc can decrease immune function and should be avoided. Moderate support for 'treating URS' Cochrane review shows benefit of zinc acetate lozenges (75 mg) to decrease duration of URS; however, zinc must be taken <24 hours after onset of URS for duration of cold only. Side effects include bad taste and nausea. ²⁴
Glutamine	This is a non-essential amino acid that is an important energy substrate for immune cells, particularly lymphocytes. Circulating glutamine is lowered after prolonged exercise and very heavy training.	Limited support Supplementation before and after exercise does not alter immune perturbations. Some evidence of a reduction in URS after endurance events in competitors receiving glutamine supplementation (2×5 g) Mechanism for therapeutic effect requires investigation. ^{107 108}
Caffeine	This is a stimulant found in a variety of foods and drinks (eg, coffee and sports drinks). Caffeine is an adenosine receptor antagonist and immune cells express adenosine receptors.	Limited support Evidence that caffeine supplementation activates lymphocytes and attenuates the fall in neutrophil function after exercise Efficacy for altering URS in athletes remains unknown. ^{109 110}
Echinacea	This is a herbal extract claimed to enhance immunity via stimulatory effects on macrophages. There is some in vitro evidence for this.	Limited support Early human studies indicated possible beneficial effects, but more recent, larger scale and better controlled studies indicate no effect of Echinacea on infection incidence or cold symptom severity. ^{111 112}
Omega-3 PUFAs	Found in fish oil May influence immune function by acting as a fuel, in their role as membrane constituents or by regulating eicosanoid formation, for example, prostaglandin Prostaglandin is immunosuppressive. Claimed to exert anti-inflammatory effects postexercise	Limited support for blunting inflammation and functional changes after muscle-damaging eccentric exercise in humans and no evidence of reducing URS in athletes ^{113 114}
Vitamin E	An essential fat-soluble antioxidant vitamin that quenches exercise-induced ROS and augments immunity	No support Immune-enhancing effects in the frail elderly but no benefit in young, healthy humans One study actually showed that vitamin E supplementation increased URS in those under heavy exertion. High doses may be pro-oxidative. ^{115 116}

Continued

Table 4 Continued

Supplement	Proposed mechanism of action	Evidence for efficacy
β -glucans	Polysaccharides derived from the cell walls of yeast, fungi, algae and oats that stimulate innate immunity	No support in humans Effective in mice inoculated with influenza virus; however, human studies with athletes show no benefits. ^{117 118}

PUFA, polyunsaturated fatty acids; ROS, reactive oxygen species; URS, upper respiratory symptoms.

23 000 emergency department visits annually are reported to be associated with dietary supplement use.³⁰ This figure can be viewed as substantial, or it can be seen as small compared with the total number of adverse responses associated with the use of medications.¹⁵ However, minor problems that do not require acute medical aid may still be sufficient to interrupt training or prevent participation, so this statistic probably underestimates the risk for athletes.

The biggest concern for athletes who compete under an anti-doping code (usually the World Anti-Doping Code, as published by WADA) is that supplements can contain prohibited substances that result in an antidoping rule violation (ADRV). Athletes—and their support teams—may be at risk for an ADRV if there is evidence that they have used or attempted to use products containing ingredients on the Prohibited List (www.wada-ama.org). A common problem is the recording of an adverse analytical finding (AAF) of a prohibited substance in a urine sample ('positive drug test') as a result of supplement use.³¹ Millions of athletes may be subject to antidoping testing, although these are mostly professional-level, national-level or international-level athletes. For these athletes in particular, even if the ingestion of the prohibited substance was unintentional, the rules of strict liability within the World Anti-Doping Code mean that an AAF will be recorded, and may mean the loss of medals won or records set, and financial sanctions as well as temporary or permanent suspension from competition. It also damages the athlete's reputation and may lead to loss of employment and income through failed sponsorship opportunities. Where there has been deliberate cheating or benefit accrued from the use of a prohibited substance, these penalties seem entirely appropriate, but it is undoubtedly true that some ADRVs can be attributed to the innocent ingestion of prohibited substances in dietary supplements, with catastrophic results for the athlete.

One cause of an AAF arising from supplement use relates to an athlete's failure to read product labels to recognise the presence of prohibited substances. Many athletes consider supplements to be 'natural' or 'regulated' and therefore safe. Other athletes are confused by the number of chemical names for some prohibited substances and thus fail to recognise them on the product label. However, the most worrying cause of an inadvertent AAF is the use of supplements that contain prohibited substances as an undeclared ingredient or contaminant. Since the publication of the seminal study on the presence of undeclared prohibited substances in supplements,³² there have been numerous reports of supplement contamination.³¹ Recent reviews suggest that this problem remains³³ (<http://www.informed-sport.com/news/australian-supplements-survey-highlights-need-testing>). It is difficult to gain a perspective of the true prevalence of supplement contamination. Although the original study reported that ~15% of more than 600 products acquired from around the world contained undeclared prohormones,³² this and other investigations rarely include a truly random sample of the supplements and sports foods used by athletes. Some individual products or categories of products can be considered inherently more at risk of contamination due to the country of origin, the manufacturer,

the type of product and the range of declared ingredients (<https://www.usada.org/substances/supplement-411/>). Nevertheless, it should also be recognised that common supplements, including vitamin C, multivitamins and minerals, have also been found, although rarely, to contain prohibited substances.³⁴ The range of prohibited substances found as undeclared ingredients in supplements now includes products from many sections of WADA's List of Prohibited Substances and Methods, including stimulants, anabolic agents, selective androgen receptor modulators, diuretics, anorectics and β 2 agonists.³³

In some cases, the amount of the prohibited substance in a supplement may be high, even higher than the normal therapeutic dose. For example, Geyer *et al*³⁵ reported the analysis of metandienone (commonly known as methandrostenolone or Dianabol) in high amounts in a 'body building' supplement from England. The recommended amount of the supplement would have supplied a dose of 10–43 mg; in comparison, the typical therapeutic dose of this drug was 2.5–5 mg/day,³⁶ although its medical use has been discontinued in most countries for many years. This amount would certainly have a potent anabolic effect, but would likely produce serious side effects, including psychiatric and behavioural effects, and significant damage to a range of body systems including the liver.³⁷ Unlike many of the earlier cases involving steroids related to nandrolone and testosterone, this is not a trivial level of contamination and raises the possibility of deliberate adulteration of the product with the intention of producing a measurable effect on muscle strength and muscle mass. Most reports of adverse health outcomes resulting from supplement use have focused on liver problems of varying degrees of severity, but other organs are also affected. One epidemiological case-control study³⁸ examined the association between use of muscle-building supplements and testicular germ cell cancer (TGCC) risk, with 356 TGCC cases and 513 controls from eastern USA. The OR for the use of muscle-building supplements in relation to risk of TGCC was elevated (OR=1.65, 95% CI 1.11 to 2.46), with significantly stronger associations for early users and longer periods of use.

Ironically, supplements that are contaminated with extremely small amounts of prohibited substances—too low to have any physiological effect—may still cause a positive doping outcome. For instance, ingestion of 19-norandrostenedione, a precursor of nandrolone, will result in the appearance in the urine of 19-norandrosterone, the diagnostic metabolite for nandrolone. If the urinary concentration of 19-norandrosterone exceeds 2 ng/mL, an AAF is recorded.³⁹ The addition of as little as 2.5 μ g of 19-norandrostenedione to a supplement can result in a urinary concentration of 19-norandrosterone that exceeds this threshold.⁴⁰ These amounts are close to the limits of detection of the analytical methods currently applied to the analysis of dietary supplements, and are far below the levels of contamination deemed acceptable from a health and safety perspective.

Various efforts are being made to address the problems, including the use of third-party auditing activities to identify products that athletes may consider to be at 'low risk' of containing prohibited substances. There can be no absolute

Consensus statement

Table 5 Supplements that may assist with training capacity, recovery, muscle soreness and injury management

Supplement	Proposed mechanism of action	Evidence for efficacy ⁴¹
Creatine monohydrate Creatine is a naturally occurring nutrient, consumed in the diet and synthesised in the body. Recommended supplement dose is 20 g/day for 5 days, followed by 3–5 g/day to increase and maintain elevated body creatine levels. ^{119 120}	Enhanced adaptive response to exercise via increased growth factor/gene expression and increased intracellular water Reduced symptoms of, or enhanced recovery from, muscle damaging exercise (eg, DOMS) Enhanced recovery from disuse or immobilisation/extreme inactivity Improved cognitive processing Decreased risk/enhanced recovery from mTBI	Many studies demonstrate improved training adaptations, such as increased lean mass or strength, indicating an enhanced adaptive response to exercise. ^{12 13 121} Reduced symptoms of, or enhanced recovery from, muscle damaging exercise (eg, DOMS) have been reported in some, but not all studies (reviewed in ref ¹²²). Enhanced recovery from disuse or immobilisation/extreme inactivity has been reported in some, but not all studies (reviewed in ref ¹²³). Improved cognitive processing is reported in most studies, especially when volunteers were fatigued by sleep deprivation or mental/physical tasks (reviewed in refs ^{11 123–125}). The effects in athletes have not been well-characterised, and only one group attempted to translate these effects to athletic performance, although with a positive result. ¹²⁶ Decreased damage and enhanced recovery from mTBI are supported by open-label trials in children ^{127 128} and using animal models. ¹²⁹ These data are not conclusive and more research is warranted. However, athletes at risk for concussion, who already ingest creatine supplements for performance or muscular benefits, may receive important brain benefits as well. A small increase in body mass is common with supplementation. This may be relevant for sports with weight classes/restrictions or where increased body mass may decrease performance.
Beta-hydroxy beta-methylbutyrate (HMB) HMB is a metabolite of the amino acid leucine. Manufacturer-recommended dosage is 3 g/day.	Enhanced adaptive response to exercise via decreased protein breakdown, increased protein synthesis, increased cholesterol synthesis, increased growth hormone and IGF-I mRNA, increased proliferation and differentiation of satellite cells and inhibited apoptosis (reviewed in ref ¹³⁰)	Beneficial effects of HMB on strength and fat-free mass are small, while the effects on muscle damage are unclear. ¹³¹ Recent reports of 'steroid like' gains in strength, power and fat-free mass, and reductions in muscle damage from HMB-free acid supplementation, ^{132–134} have not been reproduced and seem unlikely. ¹³⁵ Potential use for HMB during extreme inactivity/disuse or recovery from injury, but these effects have only been described in older adults following 10 days of bed rest. ¹³⁶ Benefits of HMB supplementation could most likely be obtained from normal dietary protein or whole protein supplements, ¹³⁷ so HMB supplements may not be more effective than adhering to the current protein intake recommendations.
Omega-3 fatty acids About 2 g/day	Improved cognitive processing Decreased risk/enhanced recovery from mTBI Increased muscle protein synthesis Reduced symptoms of, or enhanced recovery from, muscle damaging exercise (eg, DOMS)	Improved cognitive processing following omega-3 fatty acid supplementation shown in healthy older adult with mild or severe cognitive impairment (reviewed in ref ¹³⁸). It is not known if these benefits would occur in young, healthy athletes, or how this would translate to athletic performance. Animal data show that the structural damage and cognitive decline associated with mTBI are reduced/attenuated with omega-3 fatty acid supplementation when ingested either before or after the injury (reviewed in refs ^{138–140}). Two case studies support these findings, ^{141 142} and large, double-blind, placebo-controlled trials are currently under way (ClinicalTrials.gov NCT01903525 and NCT01814527). In muscle, omega-3 fatty acid supplementation can increase muscle protein synthesis, ^{143 144} but this may not occur when protein is ingested after exercise in recommended amounts. ^{143 144} Anti-inflammatory effects of omega-3 fatty acid intake may reduce muscle damage or enhance recovery from intense, eccentric exercise (eg, decrease DOMS), but this is not a consistent finding. ^{145 146} No indication that decreased omega-3 fatty acids in the body impair performance, and high-dose supplements can cause some adverse effects (reviewed in refs ^{114 139}), so the best recommendation may be to include rich sources of omega-3 fatty acids, such as fatty fish, in the diet instead of supplements. Low risk but unclear if supplementation should be pursued by athletes, in lieu of including fatty fish in the diet as a source of omega-3 fatty acids. Fish oil or omega-3 fatty acid supplement consumption could include heavy metal contaminants, or cause bleeding, digestive problems and/or increased LDL.

Continued

Table 5 Continued

Supplement	Proposed mechanism of action	Evidence for efficacy ⁴¹
Vitamin D An essential fat-soluble vitamin Skin exposure to sunlight normally accounts for 90% of the source of vitamin D.	Enhanced adaptive response to exercise Decreased stress fractures	Data on the effects of vitamin D supplementation on muscle function and recovery are equivocal, with discrepancies likely explained by differences in baseline vitamin D concentrations prior to supplementation. ^{147–150} Collectively, these data strongly suggest a role for adequate vitamin D in the adaptive process to stressful exercise. Low vitamin D status is associated with a 3.6× higher stress fracture risk in Finnish military recruits. ¹⁵¹ US Naval recruits supplemented with 800 IU/day of vitamin D ₃ and 2000 mg calcium reduced stress fracture incidence by 20%. ¹⁵² More data are needed, but it appears that vitamin D status relates to stress fracture risk, and supplementation, when warranted, may reduce this risk.
Gelatin and vitamin C/collagen Recommended dose is 5–15 g gelatin with 50 mg vitamin C. ¹⁵³ Collagen hydrolysate dose is about 10 g/day. ^{154–155}	Increased collagen production Thickened cartilage Decreased joint pain	Gelatin and collagen supplements appear to be low risk. Few data available, ^{153–155} but increased collagen production and decreased pain seem possible. Functional benefits, recovery from injury, and effects in elite athletes are not known.
Anti-inflammatory supplements Curcumin (a constituent of the spice turmeric) is often ingested for anti-inflammatory effects at a dose of about 5 g/day. Tart cherry juice at a dose of about 250–350 mL (30 mL if concentrate) twice daily for 4–5 days before an athletic event or for 2–3 days afterwards to promote recovery	Anti-inflammatory effects Reduced symptoms of, or enhanced recovery, from muscle damaging exercise (eg, DOMS)	Decreases in inflammatory cytokines and/or indirect markers of muscle damage with anti-inflammatory supplements such as curcumin ^{156–158} and tart cherry juice (reviewed in refs ^{159–160}) have been reported. Anti-inflammatory effects may be beneficial, although benefits may be sport/training-specific. More research is needed before these compounds can be recommended to athletes.

DOMS, delayed-onset muscle soreness; mTBI, mild traumatic brain injury (concussion).

guarantee that any product is entirely safe, but these schemes do help the athlete to manage the risk. Athletes contemplating the use of dietary supplements should consider very carefully

whether the possible benefits outweigh the risks of a doping offence that might end their career.

Table 6 Supplements promoted to assist with physique changes: gain in lean mass and loss of body fat mass

Supplement	Proposed mechanism of action	Evidence for efficacy ²⁵
Gaining LBM*		
Protein Usually comprised isolated proteins from various sources (whey and soy most common) Recommended daily dose: 1.6 g protein/kg/day optimal (up to 2.2 g/kg/day with no adverse effects) Recommended per-meal doses: 0.3–0.5 g protein/kg (3–4 times per day and in close temporal proximity to exercise, with postexercise being consistently shown to be effective)	Enhances lean mass gains when ingested during programmes of resistance training due to increased provision of building blocks (amino acids) and leucine as a trigger for a rise in muscle protein synthesis and suppression of muscle protein breakdown	Meta-analyses focusing on younger and older participants have shown positive effects enhancing gains in muscle mass, ^{161–162} but effects are not large.
Leucine	Stimulates muscle protein synthesis and suppresses protein breakdown (possibly through insulin)	Short-term mechanistic data available, ¹³⁷ but no long-term trials showing efficacy ¹⁶³
Losing fat mass†		
Protein From increased dietary sources or supplemental isolated proteins	Enhances fat mass loss and promotes retention of lean mass	Meta-analyses confirm small but significant effects of greater dietary protein in weight loss to enhance fat mass loss and promote lean mass retention. ^{164–165}
Pyruvate	No data	Small to trivial effect ¹⁶⁶
Chromium	Potentiates biological actions of insulin	No effect ¹⁶⁷
Green tea (polyphenol catechins and caffeine)	Thermogenic agent and/or lipolytic enhancing agent	Small to trivial effect ¹⁶⁸
α-Lipoic acid	No clear role, but possible antioxidant	Small to trivial effect ¹⁶⁹
Conjugated linolenic acid	Changes membrane fluidity favouring enhanced fat oxidation	Small to trivial effect ¹⁷⁰
Konjac fibre (glucomannan)	Water-soluble polysaccharide—dietary fibre	Small to trivial effect ¹⁷¹
Omega-3 polyunsaturated fatty acids	No clear role, but possible appetite suppression, improved blood flow and/or modulator of gene expression	Small to trivial effect ¹⁷²
Chitosan	Lipid-binding agent to reduce lipid absorption	Small to trivial effect ¹⁷³

*In combination with a progressive resistance exercise programmes.

†In combination with an exercise-induced and/or diet-induced energy deficit.

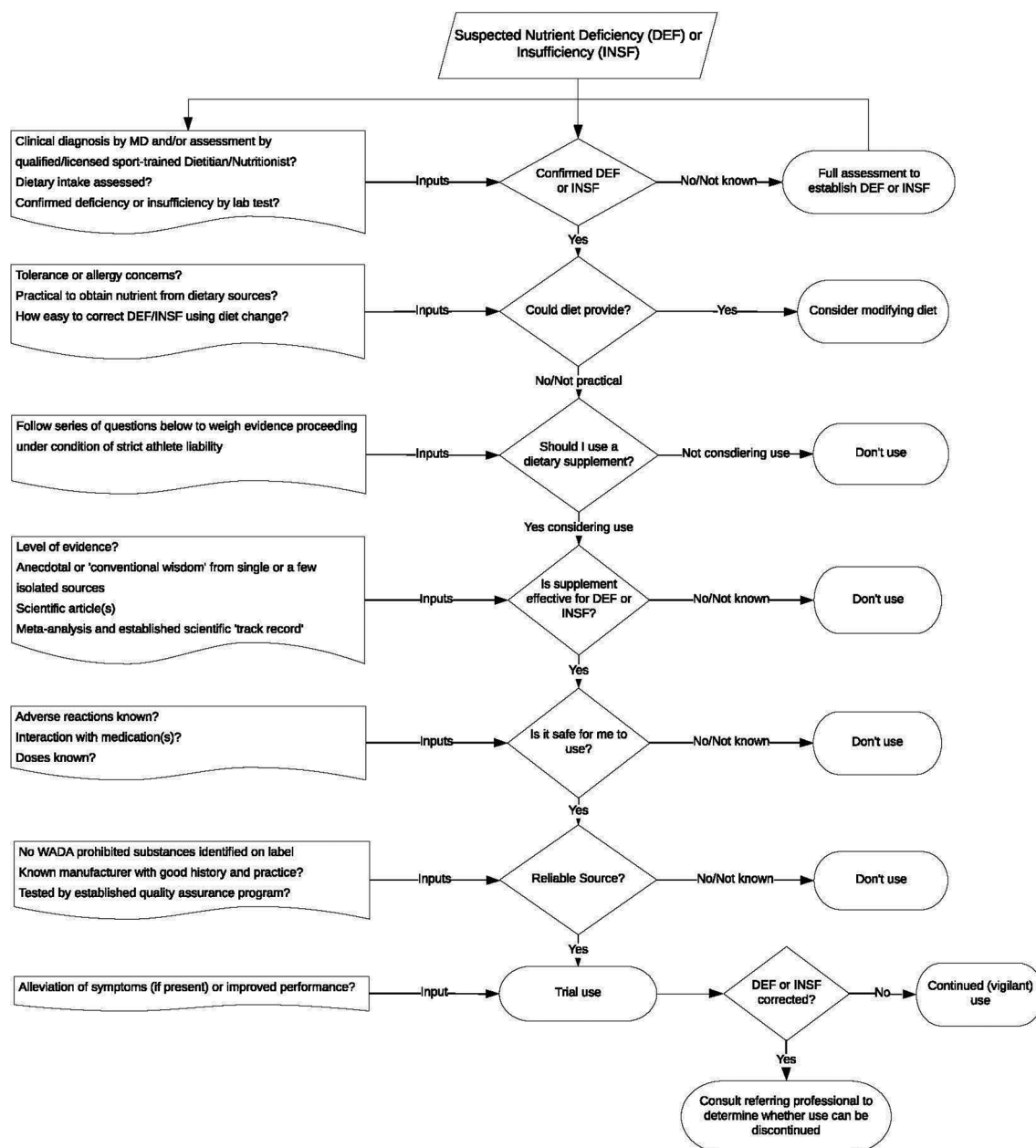


Figure 2 Flow chart to guide informed decision making and reducing risk of antidoping rule violation during nutritional supplement use. MD, medical doctors.

PRACTICAL IMPLICATIONS AND DECISION TREE

Dietary supplements are an established part of the landscape of modern sport and are likely to remain so. Athletes who take supplements often have no clear understanding of the potential effects of supplements they are using, but supplements should be used only after a careful cost-benefit analysis has been conducted. On one side of the decision tree are the rewards, the most obvious of which are correction of nutrient deficiencies, achievement of nutritional goals, or enhancement of one or another physiological/biochemical function to directly or indirectly improve performance. On the other side lie the costs, the possibility of using an ineffective supplement, the possible risks to health and the potential for an ADRV. A flow of questions that could be posed in reaching an informed decision is shown in figures 2 and 3.

In deciding whether to use a supplement, athletes should consider all aspects of their maturation in, and preparation

for, their event to ensure that the supplement under consideration provides an advantage that no other strategy can address. Whether the supplement is practical to use should also be assessed: is the product available, affordable, tolerated and compatible with the athlete's other goals? The input of the athlete's coaching team and medical/science support network is important. Athletes who do not have regular access to such a network should consider decisions around supplement use as an important reason to consult an independent sports nutrition expert as well as a physician. Analysis of the evidence around the effectiveness of supplements and their safety is often difficult. A complete nutritional assessment may provide an appropriate justification for the specific use of nutritional supplements and sports foods. For a small number of sports supplements, there is good evidence of a performance effect or indirect benefit for some athletes in some specific situations with little or no risk of adverse outcomes.^{28 41} Professional advice is often important in

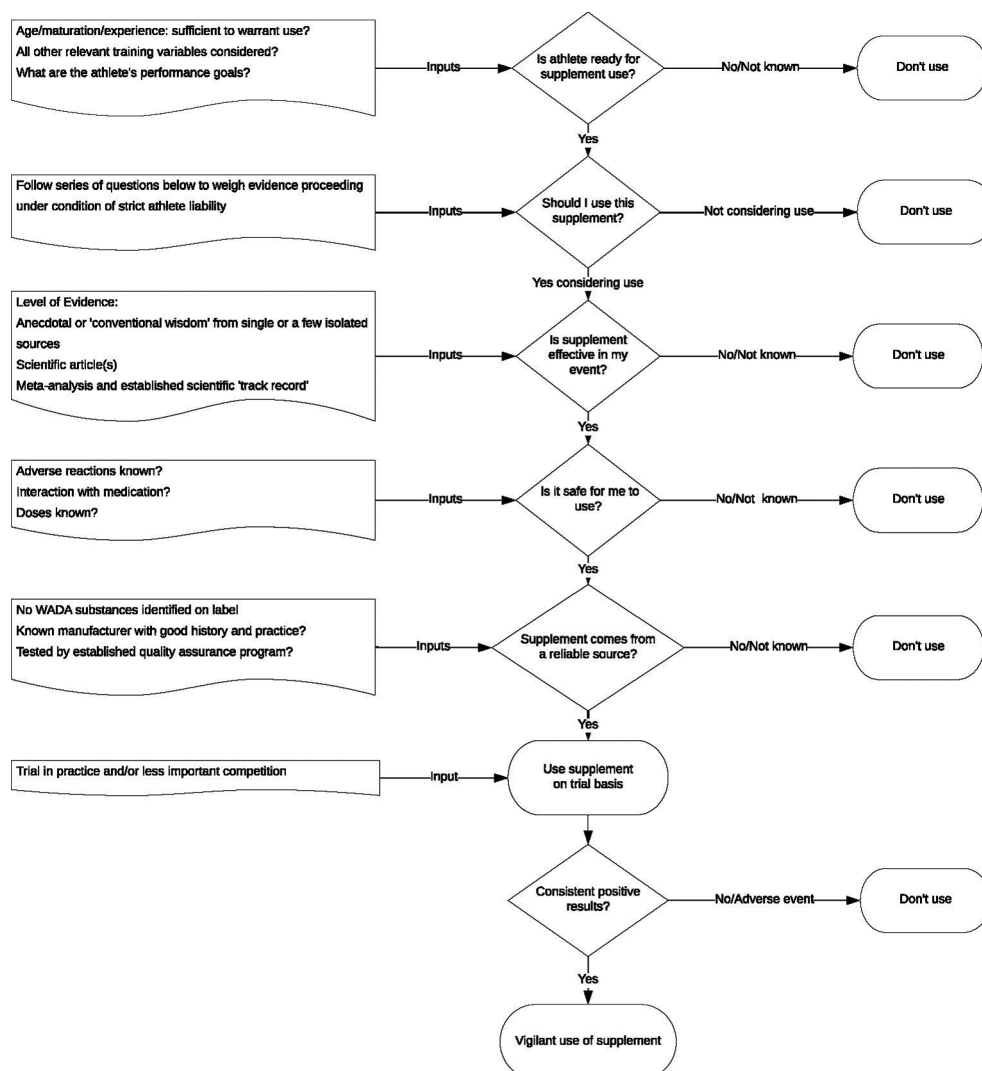


Figure 3 Flow chart to guide informed decision making and reducing risk of antidoping rule violation during ergogenic supplement use.

ensuring that the athlete is sufficiently knowledgeable about the appropriate protocol for use of these supplements, but individual athletes may respond very differently to a given supplement, with some exhibiting a markedly beneficial effect while others experiencing no benefit or even a negative effect on performance. Furthermore, the situation in which the athlete wishes to use the supplement may differ in important ways from its substantiated use. Repeated trials may be necessary to establish whether a true effect, rather than just random variation, is seen in response to use of any novel intervention. Some trial and error may also be involved in fine-tuning the supplement protocol to suit the needs of the specific situation of use or the individual athlete.

Evidence to support the effectiveness and safety of many of the supplements targeted at athletes, however, is largely absent. There seems to be little incentive for those selling supplements to invest the substantial sums needed to undertake detailed scientific evaluation of their products. Even where some evidence does exist, it may not be relevant to the high-performance athlete because of limitations in the study design (such as the specificity of the exercise tests), the study population or the context of use. Failure to verify the composition of the supplements used may also give misleading results. It seems sensible to exercise caution when using supplements, as any compound that has the potential to enhance health or

exercise performance by altering physiological function must also have the potential for adverse effects in some individuals. Athletes should see good evidence of a performance or other benefit, and should be confident that it will not be harmful to health, before accepting the financial cost and the health or performance risks associated with any supplement. Finally, the athlete should be sure, if supplements or sports foods are to be used, that they have undertaken due diligence to source products that are at low risk of containing prohibited substances.

CONCLUSION

Dietary supplements can play a small role in an athlete's sports nutrition plan, with products that include essential micronutrients, sports foods, performance supplements and health supplements all potentially providing benefits. Some supplements, when used appropriately, may help athletes to meet sports nutrition goals, train hard, and stay healthy and injury-free. A few supplements can directly enhance competition performance. However, it takes considerable effort and expert knowledge to identify which products are appropriate, how to integrate them into the athlete's sports nutrition plan, and how to ensure that any benefits outweigh the possible negative side effects, including the potential for an ADRV. A

strict risk-benefit analysis involving a decision tree approach to the effectiveness, safety and risks should identify the small number of products that may benefit the athlete. Such an analysis requires the input of a well-informed sports nutrition professional.

Author affiliations

- ¹School of Medicine, St Andrews University, St Andrews, UK
- ²Sports Nutrition, Australian Institute of Sport, Canberra, Australia
- ³Mary MacKillop Institute for Health Research, Melbourne, Australia
- ⁴Department of Neurology, Schulthess Clinic, Zurich, Switzerland
- ⁵Department of Family & Consumer Sciences (Human Nutrition), University of Wyoming, Laramie, Wyoming, USA
- ⁶School of Human Sciences (Exercise and Sport Science), The University of Western Australia, Crawley, Western Australia, Australia
- ⁷Western Australian Institute of Sport, Mount Claremont, Australia
- ⁸Department of Kinesiology, McMaster University, Hamilton, Canada
- ⁹Department of Health, Nutrition, and Exercise Science, Messiah College, Mechanicsburg, Pennsylvania, USA
- ¹⁰College of Health and Behavioural Sciences, Bangor University, Bangor, UK
- ¹¹The Norwegian Olympic and Paralympic Committee and Confederation of Sport, Oslo, Norway
- ¹²Institute of Biochemistry, Center for Preventive Doping Research, German Sport University, Cologne, Germany
- ¹³Human Physiology Research Group, Vrije Universiteit Brussel, Brussel, Belgium
- ¹⁴Department of Human Biology and Movement Sciences, NUTRIM School of Nutrition and Translational Research in Metabolism, Maastricht University Medical Centre, Maastricht, The Netherlands
- ¹⁵Human Health & Nutritional Sciences, University of Guelph, Ontario, Canada
- ¹⁶BMJ, London, UK
- ¹⁷Department of Science and Medicine, World Anti-Doping Agency (WADA), Montreal, Canada
- ¹⁸English Institute of Sport, Loughborough, UK
- ¹⁹Medical and Scientific Commission, International Olympic Committee, Lausanne, Switzerland
- ²⁰Medical and Scientific Department, International Olympic Committee, Lausanne, Switzerland
- ²¹Anti-Doping Foundation, Stockholm, Sweden
- ²²Human Health and Nutritional Sciences, Health and Performance, Centre University of Guelph, Guelph, Ontario, Canada
- ²³Medical and Scientific Commission Games Group, International Olympic Committee, Lausanne, Switzerland

Funding This research received no specific grant from any funding agency in the public, commercial or not-for-profit sectors.

Competing interests None declared.

Provenance and peer review Not commissioned; externally peer reviewed.

Open Access This is an Open Access article distributed in accordance with the Creative Commons Attribution Non Commercial (CC BY-NC 4.0) license, which permits others to distribute, remix, adapt, build upon this work non-commercially, and license their derivative works on different terms, provided the original work is properly cited and the use is non-commercial. See: <http://creativecommons.org/licenses/by-nc/4.0/>

© Article author(s) (or their employer(s) unless otherwise stated in the text of the article) 2018. All rights reserved. No commercial use is permitted unless otherwise expressly granted.

REFERENCES

- 1 Bailey RL, Gahche JJ, Lentino CV, *et al.* Dietary supplement use in the United States, 2003-2006. *J Nutr* 2011;141:261-6.
- 2 Fennell D. Determinants of supplement usage. *Prev Med* 2004;39:932-9.
- 3 Supplements UNood. Dietary supplement health and education act of 1994. 1994. https://ods.od.nih.gov/About/DSHEA_Wording.aspx#sec31994 (accessed 22 Nov 2017).
- 4 Maughan RJ, Depiesse F, Geyer H. International Association of Athletics Federations. The use of dietary supplements by athletes. *J Sports Sci* 2007;25(Suppl 1):S103-13.
- 5 Garthe I, Maughan MRJ. Athletes and Supplements - prevalence and perspectives. *Int J Sport Nutr Exerc Metab*. In Press. 2018.
- 6 Prasad AS. Zinc is an Antioxidant and Anti-Inflammatory Agent: Its Role in Human Health. *Front Nutr* 2014;1:14.
- 7 Solomons NW. Mild human zinc deficiency produces an imbalance between cell-mediated and humoral immunity. *Nutr Rev* 1998;56():27-8.
- 8 Stellingwerff T, Cox GR. Systematic review: Carbohydrate supplementation on exercise performance or capacity of varying durations. *Appl Physiol Nutr Metab* 2014;39:998-1011.
- 9 Peake JM, Neubauer O, Walsh NP, *et al.* Recovery of the immune system after exercise. *J Appl Physiol* 2017;122:1077-87.
- 10 Steenge GR, Simpson EJ, Greenhaff PL. Protein- and carbohydrate-induced augmentation of whole body creatine retention in humans. *J Appl Physiol* 2000;89:1165-71.
- 11 Gualano B, Roschel H, Lancha AH, *et al.* In sickness and in health: the widespread application of creatine supplementation. *Amino Acids* 2012;43:519-29.
- 12 Heaton LE, Davis JK, Rawson ES, *et al.* Selected in-season nutritional strategies to enhance recovery for team sport athletes: a practical overview. *Sports Med* 2017;47:2201-18.
- 13 Branch JD. Effect of creatine supplementation on body composition and performance: a meta-analysis. *Int J Sport Nutr Exerc Metab* 2003;13:198-226.
- 14 Burke LM, Peeling P. Methodologies for investigating performance changes with supplement use. *Int J Sport Nutr Exerc Metab* 2018. doi: 10.1123/ijnsnem.2017-0325. [Epub ahead of print].
- 15 Maughan RJ, Shirreffs SM, Vernec A. Making decisions about supplement use. *Int J Sport Nutr Exerc Metab*. In Press. 2018.
- 16 Clark A, Mach N. The Crosstalk between the gut microbiota and mitochondria during Exercise. *Front Physiol* 2017;8:319.
- 17 Ribeiro IF, Miranda-Vilela AL, Klautau-Guimarães MN, *et al.* The influence of erythropoietin (EPO T_G) and α -actinin-3 (ACTN3 R577X) polymorphisms on runners' responses to the dietary ingestion of antioxidant supplementation based on pequi oil (*Caryocar brasiliense* Camb): a before-after study. *J Nutrigenet Nutrigenomics* 2013;6:283-304.
- 18 Larson-Meyer DE, Woolf K, Burke LM. Assessment of nutrient status in athletes and the need for supplementation. *Int J Sport Nutr Exerc Metab* 2018. doi: 10.1123/ijnsnem.2017-0338. [Epub ahead of print].
- 19 Berman S, Castell LM, Calder PC, *et al.* Consensus Statement Immunonutrition and Exercise. *Exerc Immunol Rev* 2017;23:8-50.
- 20 Nikolaidis MG, Kerkick CM, Lamprecht M, *et al.* Does Vitamin C and E supplementation impair the favorable adaptations of regular exercise? *Oxid Med Cell Longev* 2012;2012:1-11.
- 21 Paulsen G, Cumming KT, Holden G, *et al.* Vitamin C and E supplementation hampers cellular adaptation to endurance training in humans: a double-blind, randomised, controlled trial. *J Physiol* 2014;592:1887-901.
- 22 Powers S, Nelson WB, Larson-Meyer E. Antioxidant and Vitamin D supplements for athletes: sense or nonsense? *J Sports Sci* 2011;29(Suppl 1):S47-S55.
- 23 Hao Q, Dong BR, Wu T. Probiotics for preventing acute upper respiratory tract infections. *Cochrane Database Syst Rev* 2015;2:CD006895.
- 24 Singh M, Das RR. Zinc for the common cold. *Cochrane Database Syst Rev* 2013;6:CD001364.
- 25 Hector AJ, Phillips SM. Protein recommendations for weight loss in elite athletes: a focus on body composition and performance. *Int J Sport Nutr Exerc Metab* 2018. doi: 10.1123/ijnsnem.2017-0273. [Epub ahead of print].
- 26 Mettler S, Zimmermann MB. Iron excess in recreational marathon runners. *Eur J Clin Nutr* 2010;64:490-4.
- 27 Carr AJ, Gore CJ, Dawson B. Induced alkalosis and caffeine supplementation: effects on 2,000-m rowing performance. *Int J Sport Nutr Exerc Metab* 2011;21:357-64.
- 28 Peeling P, Binnie MJ, Goods PSR, *et al.* Evidence-based supplements for the enhancement of athletic performance. *Int J Sport Nutr Exerc Metab* 2018. doi: 10.1123/ijnsnem.2017-0343. [Epub ahead of print].
- 29 Burke LM. Caffeine and sports performance. *Appl Physiol Nutr Metab* 2008;33:1319-34.
- 30 Geller AI, Shehab N, Weidle NJ, *et al.* Emergency department visits for adverse events related to dietary supplements. *N Engl J Med* 2015;373:1531-40.
- 31 Maughan RJ. Contamination of dietary supplements and positive drug tests in sport. *J Sports Sci* 2005;23:883-9.
- 32 Geyer H, Parr MK, Marek U, *et al.* Analysis of non-hormonal nutritional supplements for anabolic-androgenic steroids - results of an international study. *Int J Sports Med* 2004;25:124-9.
- 33 Martinez-Sanz JM, Sospedra I, Ortiz CM, *et al.* Intended or unintended doping? A review of the presence of doping substances in dietary supplements used in sports. *Nutrients* 2017;9:1093.
- 34 Geyer H, Parr MK, Koehler K, *et al.* Nutritional supplements cross-contaminated and faked with doping substances. *J Mass Spectrom* 2008;43:892-902.
- 35 Geyer H, Bredehoft M, Marek U, *et al.* Hohe Dosen des Anabolikums Metandienon in Nahrungsergänzungsmitteln. *Deutsche Apotheke Zeit* 2002;142:29.
- 36 Goodman LS, Gilman A. *Pharmacological basis of therapeutics*. 5th edn: Macmillan Publishing Co, 1975:1462.
- 37 Solimini R, Rotolo MC, Mastrobattista L, *et al.* Hepatotoxicity associated with illicit use of anabolic androgenic steroids in doping. *Eur Rev Med Pharmacol Sci* 2017;21:7-16.
- 38 Li N, Hauser R, Holford T, *et al.* Muscle-building supplement use and increased risk of testicular germ cell cancer in men from Connecticut and Massachusetts. *Br J Cancer* 2015;112:1247-50.

- 39 Baume N, Avois L, Schweizer C, *et al.* [13C]Nandrolone excretion in trained athletes: interindividual variability in metabolism. *Clin Chem* 2004;50:355–64.
- 40 Watson P, Judkins C, Houghton E, *et al.* Urinary nandrolone metabolite detection after ingestion of a nandrolone precursor. *Med Sci Sports Exerc* 2009;41:766–72.
- 41 Rawson ES, Miles MP, Larson-Meyer DE. Dietary supplements for health, adaptation, and recovery in athletes. *Int J Sport Nutr Exerc Metab* 2018. doi: 10.1123/ijnsn.2017-0340. [Epub ahead of print].
- 42 Hossein-nezhad A, Holick MF. Vitamin D for health: a global perspective. *Mayo Clin Proc* 2013;88:720–55.
- 43 Larson-Meyer DE, Willis KS. Vitamin D and athletes. *Curr Sports Med Rep* 2010;9:220–6.
- 44 Heaney RP. Vitamin D: criteria for safety and efficacy. *Nutr Rev* 2008;66:S178–S181.
- 45 Thomas DT, Erdman KA, Burke LM. American college of sports medicine joint position statement. Nutrition and athletic performance. *Med Sci Sports Exerc* 2016;48:543–68.
- 46 Gibson RS. *Principles of nutritional assessment*. Second Edn. New York, NY: Oxford University Press, 2005.
- 47 Moretti D, Goede JS, Zeder C, *et al.* Oral iron supplements increase hepcidin and decrease iron absorption from daily or twice-daily doses in iron-depleted young women. *Blood* 2015;126:1981–9.
- 48 Spriet LL. Exercise and sport performance with low doses of caffeine. *Sports Med* 2014;44 (Suppl 2):175–84.
- 49 Ganio MS, Klau JF, Casa DJ, *et al.* Effect of caffeine on sport-specific endurance performance: a systematic review. *J Strength Cond Res* 2009;23:315–24.
- 50 French C, McNaughton L, Davies P, *et al.* Caffeine ingestion during exercise to exhaustion in elite distance runners. Revision. *J Sports Med Phys Fitness* 1991;31:425–32.
- 51 Paton C, Costa V, Guglielmo L. Effects of caffeine chewing gum on race performance and physiology in male and female cyclists. *J Sports Sci* 2015;33:1076–83.
- 52 Talanian JL, Spriet LL. Low and moderate doses of caffeine late in exercise improve performance in trained cyclists. *Appl Physiol Nutr Metab* 2016;41:850–5.
- 53 Wiles JD, Coleman D, Tegerdine M, *et al.* The effects of caffeine ingestion on performance time, speed and power during a laboratory-based 1 km cycling time-trial. *J Sports Sci* 2006;24:1165–71.
- 54 Schneiker KT, Bishop D, Dawson B, *et al.* Effects of caffeine on prolonged intermittent-sprint ability in team-sport athletes. *Med Sci Sports Exerc* 2006;38:578–85.
- 55 Wellington BM, Leveritt MD, Kelly VG. The effect of caffeine on repeat-high-intensity-effort performance in rugby league players. *Int J Sports Physiol Perform* 2017;12:206–10.
- 56 Bruce CR, Anderson ME, Fraser SF, *et al.* Enhancement of 2000-m rowing performance after caffeine ingestion. *Med Sci Sports Exerc* 2000;32:1958–63.
- 57 Maughan RJ, Griffin J. Caffeine ingestion and fluid balance: a review. *J Hum Nutr Diet* 2003;16:411–20.
- 58 Rawson ES, Persky AM. Mechanisms of muscular adaptations to creatine supplementation: review article. *Int SportMed J* 2007;8:43–53.
- 59 Volek JS, Rawson ES. Scientific basis and practical aspects of creatine supplementation for athletes. *Nutrition* 2004;20(7-8):609–14.
- 60 Buford TW, Kreider RB, Stout JR, *et al.* International Society of Sports Nutrition position stand: creatine supplementation and exercise. *J Int Soc Sports Nutr* 2007;4:6.
- 61 Lanhers C, Pereira B, Naughton G, *et al.* Creatine Supplementation and Upper Limb Strength Performance: A Systematic Review and Meta-Analysis. *Sports Med* 2017;47:163–73.
- 62 Hultman E, Soderlund K, Timmons JA, *et al.* Muscle creatine loading in men. *J Appl Physiol* 1996;81:232–7.
- 63 Maganaris CN, Maughan RJ. Creatine supplementation enhances maximum voluntary isometric force and endurance capacity in resistance trained men. *Acta Physiol Scand* 1998;163:279–87.
- 64 Cooper R, Naclerio F, Allgrove J, *et al.* Creatine supplementation with specific view to exercise/sports performance: an update. *J Int Soc Sports Nutr* 2012;9:33.
- 65 Kreider RB, Kalman DS, Antonio J, *et al.* International Society of Sports Nutrition position stand: safety and efficacy of creatine supplementation in exercise, sport, and medicine. *J Int Soc Sports Nutr* 2017;14:18.
- 66 Deminice R, Rosa FT, Franco GS, *et al.* Effects of creatine supplementation on oxidative stress and inflammatory markers after repeated-sprint exercise in humans. *Nutrition* 2013;29:1127–32.
- 67 Schilling BK, Stone MH, Utter A, *et al.* Creatine supplementation and health variables: a retrospective study. *Med Sci Sports Exerc* 2001;33:183–8.
- 68 Powers ME, Arnold BL, Weltman AL, *et al.* Creatine Supplementation Increases Total Body Water Without Altering Fluid Distribution. *J Athl Train* 2003;38:44–50.
- 69 Bailey SJ, Winyard P, Vanhatalo A, *et al.* Dietary nitrate supplementation reduces the O₂ cost of low-intensity exercise and enhances tolerance to high-intensity exercise in humans. *J Appl Physiol* 2009;107:1144–55.
- 70 Thompson C, Wylie LJ, Fulford J, *et al.* Dietary nitrate improves sprint performance and cognitive function during prolonged intermittent exercise. *Eur J Appl Physiol* 2015;115:1825–34.
- 71 Wylie LJ, Bailey SJ, Kelly J, *et al.* Influence of beetroot juice supplementation on intermittent exercise performance. *Eur J Appl Physiol* 2016;116:415–25.
- 72 Jones AM. Dietary Nitrate Supplementation and Exercise Performance. *Sports Medicine* 2014;44:35–45.
- 73 Bailey SJ, Varnham RL, DiMenna FJ, *et al.* Inorganic nitrate supplementation improves muscle oxygenation, O₂ uptake kinetics, and exercise tolerance at high but not low pedal rates. *J Appl Physiol* 2015;118:1396–405.
- 74 Bailey SJ, Fulford J, Vanhatalo A, *et al.* Dietary nitrate supplementation enhances muscle contractile efficiency during knee-extensor exercise in humans. *J Appl Physiol* 2010;109:135–48.
- 75 Hoon MW, Jones AM, Johnson NA, *et al.* The effect of variable doses of inorganic nitrate-rich beetroot juice on simulated 2,000-m rowing performance in trained athletes. *Int J Sports Physiol Perform* 2014;9:615–20.
- 76 Thompson C, Vanhatalo A, Jell H, *et al.* Dietary nitrate supplementation improves sprint and high-intensity intermittent running performance. *Nitric Oxide* 2016;61:55–61.
- 77 Jones AM. Influence of dietary nitrate on the physiological determinants of exercise performance: a critical review. *Appl Physiol Nutr Metab* 2014;39:1019–28.
- 78 McMahon NF, Leveritt MD, Pavay TG. The effect of dietary nitrate supplementation on endurance exercise performance in healthy adults: a systematic review and meta-analysis. *Sports Med* 2017;47:735–756.
- 79 Reynolds CME, Halpenny C, Hughes C, *et al.* Acute ingestion of beetroot juice does not improve repeated sprint performance in male team sport athletes. *Proc Nutr Soc* 2016;75:E97.
- 80 Wylie LJ, Kelly J, Bailey SJ, *et al.* Beetroot juice and exercise: pharmacodynamic and dose-response relationships. *J Appl Physiol* 2013;115:325–36.
- 81 Lancha Junior AH, Painelli VS, Saunders B, *et al.* Nutritional strategies to modulate intracellular and extracellular buffering capacity during high-intensity exercise. *Sports Med* 2015;45 (Suppl 1):71–81.
- 82 Saunders B, Elliott-Sale K, Artioli GG, *et al.* β-alanine supplementation to improve exercise capacity and performance: a systematic review and meta-analysis. *Br J Sports Med* 2017;51.
- 83 Baguet A, Bourgois J, Vanhee L, *et al.* Important role of muscle carnosine in rowing performance. *J Appl Physiol* 2010;109:1096–101.
- 84 Chung W, Shaw G, Anderson ME, *et al.* Effect of 10 week beta-alanine supplementation on competition and training performance in elite swimmers. *Nutrients* 2012;4:1441–53.
- 85 Nassif GP, Sporer B, Stathis CG. β-alanine efficacy for sports performance improvement: from science to practice. *Br J Sports Med* 2017;51.
- 86 Bellinger PM. β-Alanine supplementation for athletic performance: an update. *J Strength Cond Res* 2014;28:1751–70.
- 87 Hobson RM, Saunders B, Ball G, *et al.* Effects of β-alanine supplementation on exercise performance: a meta-analysis. *Amino Acids* 2012;43:25–37.
- 88 Katz A, Costill DL, King DS, *et al.* Maximal exercise tolerance after induced alkalosis. *Int J Sports Med* 1984;5:107–10.
- 89 Mainwood GW, Worsley-Brown P. The effects of extracellular pH and buffer concentration on the efflux of lactate from frog sartorius muscle. *J Physiol* 1975;250:1–22.
- 90 Carr AJ, Hopkins WG, Gore CJ. Effects of acute alkalosis and acidosis on performance: a meta-analysis. *Sports Med* 2011;41:801–14.
- 91 Siegler JC, Marshall PW, Bray J, *et al.* Sodium bicarbonate supplementation and ingestion timing: does it matter? *J Strength Cond Res* 2012;26:1953–8.
- 92 Lambert CP, Greenhaff PL, Ball D, *et al.* Influence of sodium bicarbonate ingestion on plasma ammonia accumulation during incremental exercise in man. *Eur J Appl Physiol Occup Physiol* 1993;66:49–54.
- 93 Douroudos II, Fatouros IG, Gourgoulis V, *et al.* Dose-related effects of prolonged NaHCO₃ ingestion during high-intensity exercise. *Med Sci Sports Exerc* 2006;38:1746–53.
- 94 Burke LM. Practical considerations for bicarbonate loading and sports performance. *Nestle Nutr Inst Workshop Ser* 2013;75:15–26.
- 95 Mc Naughton L, Thompson D. Acute versus chronic sodium bicarbonate ingestion and anaerobic work and power output. *J Sports Med Phys Fitness* 2001;41:456–62.
- 96 Carr AJ, Slater GJ, Gore CJ, *et al.* Effect of sodium bicarbonate on (HCO₃⁻), pH, and gastrointestinal symptoms. *Int J Sport Nutr Exerc Metab* 2011;21:189–94.
- 97 Requena B, Zabala M, Padial P, *et al.* Sodium bicarbonate and sodium citrate: ergogenic aids? *J Strength Cond Res* 2005;19:213–24.
- 98 He CS, Aw Yong XH, Walsh NP, *et al.* Is there an optimal vitamin D status for immunity in athletes and military personnel? *Exerc Immunol Rev* 2016;22:42–64.
- 99 Gleeson M, Bishop NC, Oliveira M, *et al.* Daily probiotic's (Lactobacillus casei Shirota) reduction of infection incidence in athletes. *Int J Sport Nutr Exerc Metab* 2011;21:55–64.
- 100 Hemilä H, Chalker E. Vitamin C for preventing and treating the common cold. *Cochrane Database Syst Rev* 2013;1:CD000980.
- 101 Nieman DC, Henson DA, McAnulty SR, *et al.* Influence of vitamin C supplementation on oxidative and immune changes after an ultramarathon. *J Appl Physiol* 2002;92:1970–7.
- 102 Walsh NP, Gleeson M, Shephard RJ, *et al.* Position statement. part one: immune function and exercise. *Exerc Immunol Rev* 2011;17:6–63.

- 103 Brinkworth GD, Buckley JD. Concentrated bovine colostrum protein supplementation reduces the incidence of self-reported symptoms of upper respiratory tract infection in adult males. *Eur J Nutr* 2003;42:228–32.
- 104 Davison G, Diment BC. Bovine colostrum supplementation attenuates the decrease of salivary lysozyme and enhances the recovery of neutrophil function after prolonged exercise. *Br J Nutr* 2010;103:1425–32.
- 105 Nieman DC, Henson DA, Gross SJ, et al. Quercetin reduces illness but not immune perturbations after intensive exercise. *Med Sci Sports Exerc* 2007;39:1561–9.
- 106 Gleeson M. Immunological aspects of sport nutrition. *Immunol Cell Biol* 2016;94:117–23.
- 107 Castell LM, Poortmans JR, Newsholme EA. Does glutamine have a role in reducing infections in athletes? *Eur J Appl Physiol Occup Physiol* 1996;73:488–90.
- 108 Walsh NP, Blannin AK, Robson PJ, et al. Glutamine, exercise and immune function. Links and possible mechanisms. *Sports Med* 1998;26:177–91.
- 109 Dulson DK, Bishop NC. Effect of a high and low dose of caffeine on human lymphocyte activation in response to antigen stimulation. *Appl Physiol Nutr Metab* 2016;41:224–7.
- 110 Walker GJ, Finlay O, Griffiths H, et al. Immunoendocrine response to cycling following ingestion of caffeine and carbohydrate. *Med Sci Sports Exerc* 2007;39:1554–60.
- 111 Linde K, Barrett B, Wölkart K, et al. Echinacea for preventing and treating the common cold. *Cochrane Database Syst Rev* 2006;1:CD000530.
- 112 Karsch-Völkl M, Barrett B, Linde K. Echinacea for preventing and treating the common cold. *JAMA* 2015;313:618–9.
- 113 Jakeman JR, Lambrick DM, Wooley B, et al. Effect of an acute dose of omega-3 fish oil following exercise-induced muscle damage. *Eur J Appl Physiol* 2017;117:575–82.
- 114 Mickleborough TD. Omega-3 polyunsaturated fatty acids in physical performance optimization. *Int J Sport Nutr Exerc Metab* 2013;23:83–96.
- 115 Meydani SN, Han SN, Hamer DH. Vitamin E and respiratory infection in the elderly. *Ann N Y Acad Sci* 2004;1031:214–22.
- 116 Hemilä H, Virtamo J, Albanes D, et al. Physical activity and the common cold in men administered vitamin E and beta-carotene. *Med Sci Sports Exerc* 2003;35:1815–20.
- 117 Nieman DC, Henson DA, McMahon M, et al. Beta-glucan, immune function, and upper respiratory tract infections in athletes. *Med Sci Sports Exerc* 2008;40:1463–71.
- 118 Volman JJ, Ramakers JD, Plat J. Dietary modulation of immune function by beta-glucans. *Physiol Behav* 2008;94:276–84.
- 119 Harris RC, Söderlund K, Hultman E. Elevation of creatine in resting and exercised muscle of normal subjects by creatine supplementation. *Clin Sci* 1992;83:367–74.
- 120 Hultman E, Söderlund K, Timmons JA, et al. Muscle creatine loading in men. *J Appl Physiol* 1996;81:232–7.
- 121 Rawson ES, Volek JS. Effects of creatine supplementation and resistance training on muscle strength and weightlifting performance. *J Strength Cond Res* 2003;17:822–31.
- 122 Rawson ES, Clarkson PM, Tarnopolsky MA. Perspectives on exertional rhabdomyolysis. *Sports Med* 2017;47:33–49.
- 123 Gualano B, Rawson ES, Candow DG, et al. Creatine supplementation in the aging population: effects on skeletal muscle, bone and brain. *Amino Acids* 2016;48:1793–805.
- 124 Rae CD, Bröer S. Creatine as a booster for human brain function. How might it work? *Neurochem Int* 2015;89:249–59.
- 125 Rawson ES, Venezia AC. Use of creatine in the elderly and evidence for effects on cognitive function in young and old. *Amino Acids* 2011;40:1349–62.
- 126 Cook CJ, Crewther BT, Kilduff LP, et al. Skill execution and sleep deprivation: effects of acute caffeine or creatine supplementation - a randomized placebo-controlled trial. *J Int Soc Sports Nutr* 2011;8:2.
- 127 Sakellaris G, Kotsiou M, Tamiolaki M, et al. Prevention of complications related to traumatic brain injury in children and adolescents with creatine administration: an open label randomized pilot study. *J Trauma* 2006;61:322–9.
- 128 Sakellaris G, Nasis G, Kotsiou M, et al. Prevention of traumatic headache, dizziness and fatigue with creatine administration. A pilot study. *Acta Paediatr* 2008;97:31–4.
- 129 Sullivan PG, Geiger JD, Mattson MP, et al. Dietary supplement creatine protects against traumatic brain injury. *Ann Neurol* 2000;48:723–9.
- 130 Szczeniński KA, Ostaszewski P, Fuller JC, et al. Dietary supplementation of β -hydroxy- β -methylbutyrate in animals - a review. *J Anim Physiol Anim Nutr* 2015;99:405–17.
- 131 Rowlands DS, Thomson JS. Effects of beta-hydroxy-beta-methylbutyrate supplementation during resistance training on strength, body composition, and muscle damage in trained and untrained young men: a meta-analysis. *J Strength Cond Res* 2009;23:836–46.
- 132 Lowery RP, Joy JM, Rathmacher JA, et al. Interaction of beta-hydroxy-beta-methylbutyrate free acid and adenosine triphosphate on muscle mass, strength, and power in resistance trained individuals. *J Strength Cond Res* 2016;30:1843–54.
- 133 Wilson JM, Lowery RP, Joy JM, et al. The effects of 12 weeks of beta-hydroxy-beta-methylbutyrate free acid supplementation on muscle mass, strength, and power in resistance-trained individuals: a randomized, double-blind, placebo-controlled study. *Eur J Appl Physiol* 2014;114:1217–27.
- 134 Wilson JM, Lowery RP, Joy JM, et al. β -Hydroxy- β -methylbutyrate free acid reduces markers of exercise-induced muscle damage and improves recovery in resistance-trained men. *Br J Nutr* 2013;110:538–44.
- 135 Phillips SM, Aragon AA, Arciero PJ, et al. Changes in body composition and performance with supplemental HMB-FA+ATP. *J Strength Cond Res* 2017:e71–e72.
- 136 Deutz NE, Pereira SL, Hays NP, et al. Effect of β -hydroxy- β -methylbutyrate (HMB) on lean body mass during 10 days of bed rest in older adults. *Clin Nutr* 2013;32:704–12.
- 137 Wilkinson DJ, Hossain T, Hill DS, et al. Effects of leucine and its metabolite β -hydroxy- β -methylbutyrate on human skeletal muscle protein metabolism. *J Physiol* 2013;591:2911–23.
- 138 Barrett EC, McBurney MI, Ciappio ED. ω -3 fatty acid supplementation as a potential therapeutic aid for the recovery from mild traumatic brain injury/concussion. *Adv Nutr* 2014;5:268–77.
- 139 Erdman J, Oria M, Pillsbury L. *Nutrition and traumatic brain injury: improving acute and subacute health outcomes in military personnel*. Washington, DC: National Academies Press, 2011.
- 140 Tipton KD. Nutritional support for exercise-induced injuries. *Sports Med* 2015;45 (Suppl 1):93–104.
- 141 Lewis M, Ghassemi P, Hibbeln J. Therapeutic use of omega-3 fatty acids in severe head trauma. *Am J Emerg Med* 2013;31:273.e5–8.
- 142 Roberts L, Bailes J, Dedhia H, et al. Surviving a mine explosion. *J Am Coll Surg* 2008;207:276–83.
- 143 Smith GI, Atherton P, Reeds DN, et al. Omega-3 polyunsaturated fatty acids augment the muscle protein anabolic response to hyperinsulinaemia-hyperaminoacidaemia in healthy young and middle-aged men and women. *Clin Sci* 2011;121:267–78.
- 144 Smith GI, Atherton P, Reeds DN, et al. Dietary omega-3 fatty acid supplementation increases the rate of muscle protein synthesis in older adults: a randomized controlled trial. *Am J Clin Nutr* 2011;93:402–12.
- 145 Gray P, Chappell A, Jenkinson AM, et al. Fish oil supplementation reduces markers of oxidative stress but not muscle soreness after eccentric exercise. *Int J Sport Nutr Exerc Metab* 2014;24:206–14.
- 146 Jouris KB, McDaniel JL, Weiss EP. The effect of Omega-3 fatty acid supplementation on the inflammatory response to eccentric strength exercise. *J Sports Sci Med* 2011;10:432–8.
- 147 Close GL, Hamilton DL, Philp A, et al. New strategies in sport nutrition to increase exercise performance. *Free Radic Biol Med* 2016;98:144–58.
- 148 Close GL, Russell J, Cobley JN, et al. Assessment of vitamin D concentration in non-supplemented professional athletes and healthy adults during the winter months in the UK: implications for skeletal muscle function. *J Sports Sci* 2013;31:344–53.
- 149 Owens DJ, Sharples AP, Polydorou I, et al. A systems-based investigation into vitamin D and skeletal muscle repair, regeneration, and hypertrophy. *Am J Physiol Endocrinol Metab* 2015;309:E1019–31.
- 150 Owens DJ, Webber D, Impey SG, et al. Vitamin D supplementation does not improve human skeletal muscle contractile properties in insufficient young males. *Eur J Appl Physiol* 2014;114:1309–20.
- 151 Ruohola JP, Laaksi I, Ylikomi T, et al. Association between serum 25(OH)D concentrations and bone stress fractures in Finnish young men. *J Bone Miner Res* 2006;21:1483–8.
- 152 Lappe J, Cullen D, Haynatzki G, et al. Calcium and vitamin d supplementation decreases incidence of stress fractures in female navy recruits. *J Bone Miner Res* 2008;23:741–9.
- 153 Shaw G, Lee-Barthel A, Ross ML, et al. Vitamin C-enriched gelatin supplementation before intermittent activity augments collagen synthesis. *Am J Clin Nutr* 2017;105:136–43.
- 154 Clark KL, Sebastianelli W, Flechsenhar KR, et al. 24-Week study on the use of collagen hydrolysate as a dietary supplement in athletes with activity-related joint pain. *Curr Med Res Opin* 2008;24:1485–96.
- 155 McAlindon TE, Nuite M, Krishnan N, et al. Change in knee osteoarthritis cartilage detected by delayed gadolinium enhanced magnetic resonance imaging following treatment with collagen hydrolysate: a pilot randomized controlled trial. *Osteoarthritis Cartilage* 2011;19:399–405.
- 156 McFarlin BK, Venable AS, Henning AL, et al. Reduced inflammatory and muscle damage biomarkers following oral supplementation with bioavailable curcumin. *BBA Clin* 2016;5:72–8.
- 157 Nicol LM, Rowlands DS, Fazakerly R, et al. Curcumin supplementation likely attenuates delayed onset muscle soreness (DOMS). *Eur J Appl Physiol* 2015;115:1769–77.
- 158 Sciberras JN, Galloway SD, Fenech A, et al. The effect of turmeric (Curcumin) supplementation on cytokine and inflammatory marker responses following 2 hours of endurance cycling. *J Int Soc Sports Nutr* 2015;12:5.
- 159 Coelho Rabello Lima L, Oliveira Assumpção C, Prestes J, et al. Consumption of cherries as a strategy to attenuate exercise-induced muscle damage and inflammation in humans. *Nutr Hosp* 2015;32:1885–93.
- 160 Bell PG, McHugh MP, Stevenson E, et al. The role of cherries in exercise and health. *Scand J Med Sci Sports* 2014;24:477–90.
- 161 Morton RW, Murphy KT, McKellar SR, et al. A systematic review, meta-analysis and meta-regression of the effect of protein supplementation on resistance training-

- induced gains in muscle mass and strength in healthy adults. *Br J Sports Med* 2018;52:376–84.
- 162 Cermak NM, Res PT, de Groot LC, *et al.* Protein supplementation augments the adaptive response of skeletal muscle to resistance-type exercise training: a meta-analysis. *Am J Clin Nutr* 2012;96:1454–64.
 - 163 Aguiar AF, Grala AP, da Silva RA, *et al.* Free leucine supplementation during an 8-week resistance training program does not increase muscle mass and strength in untrained young adult subjects. *Amino Acids* 2017;49:1255–62.
 - 164 Wycherley TP, Moran LJ, Clifton PM, *et al.* Effects of energy-restricted high-protein, low-fat compared with standard-protein, low-fat diets: a meta-analysis of randomized controlled trials. *Am J Clin Nutr* 2012;96:1281–98.
 - 165 Krieger JW, Sitren HS, Daniels MJ, *et al.* Effects of variation in protein and carbohydrate intake on body mass and composition during energy restriction: a meta-regression 1. *Am J Clin Nutr* 2006;83:260–74.
 - 166 Onakpoya I, Hunt K, Wider B, *et al.* Pyruvate supplementation for weight loss: a systematic review and meta-analysis of randomized clinical trials. *Crit Rev Food Sci Nutr* 2014;54:17–23.
 - 167 Tian H, Guo X, Wang X, *et al.* Chromium picolinate supplementation for overweight or obese adults. *Cochrane Database Syst Rev* 2013;11:CD010063.
 - 168 Jurgens TM, Whelan AM, Killian L, *et al.* Green tea for weight loss and weight maintenance in overweight or obese adults. *Cochrane Database Syst Rev* 2012;12:CD008650.
 - 169 Kucukgoncu S, Zhou E, Lucas KB, *et al.* Alpha-lipoic acid (ALA) as a supplementation for weight loss: results from a meta-analysis of randomized controlled trials. *Obes Rev* 2017;18:594–601.
 - 170 Onakpoya IJ, Posadzki PP, Watson LK, *et al.* The efficacy of long-term conjugated linoleic acid (CLA) supplementation on body composition in overweight and obese individuals: a systematic review and meta-analysis of randomized clinical trials. *Eur J Nutr* 2012;51:127–34.
 - 171 Onakpoya I, Posadzki P, Ernst E. The efficacy of glucomannan supplementation in overweight and obesity: a systematic review and meta-analysis of randomized clinical trials. *J Am Coll Nutr* 2014;33:70–8.
 - 172 Zhang YY, Liu W, Zhao TY, *et al.* Efficacy of omega-3 polyunsaturated fatty acids supplementation in managing overweight and obesity: a meta-analysis of randomized clinical trials. *J Nutr Health Aging* 2017;21:187–92.
 - 173 Jull AB, Ni Mhurchu C, Bennett DA, *et al.* Chitosan for overweight or obesity. *Cochrane Database Syst Rev* 2008;3:CD003892.